

IGLL5 Antibody (C-term)

Affinity Purified Rabbit Polyclonal Antibody (Pab)

Catalog # AP18459b

Product Information

Application	WB, E
Primary Accession	B9A064
Other Accession	A0M8Q6 , P0CF74 , P0CG05 , P0CG04 , NP_001171597.1
Reactivity	Human
Host	Rabbit
Clonality	Polyclonal
Isotype	Rabbit IgG
Clone Names	RB38821
Calculated MW	23063
Antigen Region	167-193

Additional Information

Gene ID	100423062
Other Names	Immunoglobulin lambda-like polypeptide 5, G lambda-1, Germline immunoglobulin lambda 1, IGLL5
Target/Specificity	This IGLL5 antibody is generated from rabbits immunized with a KLH conjugated synthetic peptide between 167-193 amino acids from the C-terminal region of human IGLL5.
Dilution	WB~~1:1000 E~~Use at an assay dependent concentration.
Format	Purified polyclonal antibody supplied in PBS with 0.09% (W/V) sodium azide. This antibody is purified through a protein A column, followed by peptide affinity purification.
Storage	Maintain refrigerated at 2-8°C for up to 2 weeks. For long term storage store at -20°C in small aliquots to prevent freeze-thaw cycles.
Precautions	IGLL5 Antibody (C-term) is for research use only and not for use in diagnostic or therapeutic procedures.

Protein Information

Name	IGLL5
Cellular Location	Secreted.
Tissue Location	Contrary to IGLL1, not expressed in pre-B-cells.

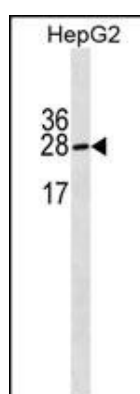
Background

This gene encodes one of the immunoglobulin lambda-like polypeptides. It is located within the immunoglobulin lambda locus but it does not require somatic rearrangement for expression. The first exon of this gene is unrelated to immunoglobulin variable genes; the second and third exons are the immunoglobulin lambda joining 1 and the immunoglobulin lambda constant 1 gene segments. Alternative splicing results in multiple transcript variants.

References

Evans, R.J., et al. J. Exp. Med. 173(2):305-311(1991)
Guglielmi, P., et al. Eur. J. Immunol. 21(2):501-508(1991)

Images



IGLL5 Antibody (C-term) (Cat. #AP18459b) western blot analysis in HepG2 cell line lysates (35ug/lane). This demonstrates the IGLL5 Antibody detected the IGLL5 protein (arrow).

Please note: All products are 'FOR RESEARCH USE ONLY. NOT FOR USE IN DIAGNOSTIC OR THERAPEUTIC PROCEDURES'.