

CTEN Antibody (N-term)

Affinity Purified Rabbit Polyclonal Antibody (Pab)

Catalog # AP18466a

Product Information

Application	WB, E
Primary Accession	Q8IZW8
Other Accession	NP_116254.4
Reactivity	Human
Host	Rabbit
Clonality	Polyclonal
Isotype	Rabbit IgG
Clone Names	RB21221
Calculated MW	76764
Antigen Region	132-159

Additional Information

Gene ID	84951
Other Names	Tensin-4, C-terminal tensin-like protein, TNS4, CTEN
Target/Specificity	This CTEN antibody is generated from rabbits immunized with a KLH conjugated synthetic peptide between 132-159 amino acids from the N-terminal region of human CTEN.
Dilution	WB~~1:1000 E~~Use at an assay dependent concentration.
Format	Purified polyclonal antibody supplied in PBS with 0.09% (W/V) sodium azide. This antibody is purified through a protein A column, followed by peptide affinity purification.
Storage	Maintain refrigerated at 2-8°C for up to 2 weeks. For long term storage store at -20°C in small aliquots to prevent freeze-thaw cycles.
Precautions	CTEN Antibody (N-term) is for research use only and not for use in diagnostic or therapeutic procedures.

Protein Information

Name	TNS4
Synonyms	CTEN
Function	Promotes EGF-induced cell migration by displacing tensin TNS3 from the cytoplasmic tail of integrin ITGB1 which results in dissociation of TNS3 from

focal adhesions, disassembly of actin stress fibers and initiation of cell migration (PubMed:[17643115](#)). Suppresses ligand-induced degradation of EGFR by reducing EGFR ubiquitination in the presence of EGF (PubMed:[23774213](#)). Increases MET protein stability by inhibiting MET endocytosis and subsequent lysosomal degradation which leads to increased cell survival, proliferation and migration (PubMed:[24814316](#)).

Cellular Location

Cell junction, focal adhesion. Cytoplasm, cytoskeleton

Tissue Location

Expressed at low levels in colon (at protein level) (PubMed:19214987, PubMed:19487278). Expressed in prostate and placenta (PubMed:12154022).

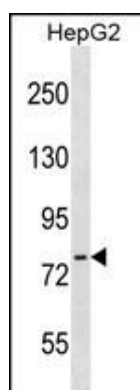
Background

TNS4 may be involved in cell migration, cartilage development and in linking signal transduction pathways to the cytoskeleton (By similarity). May promote apoptosis, via its cleavage by caspase-3.

References

Bailey, S.D., et al. Diabetes Care 33(10):2250-2253(2010)
Li, Y., et al. Prostate 70(1):48-60(2010)
Talmud, P.J., et al. Am. J. Hum. Genet. 85(5):628-642(2009)
Liao, Y.C., et al. Cancer Res. 69(11):4563-4566(2009)
Martuszevska, D., et al. PLoS ONE 4 (2), E4350 (2009) :

Images



CTEN Antibody (N-term) (Cat. #AP18466a) western blot analysis in HepG2 cell line lysates (35ug/lane). This demonstrates the CTEN antibody detected the CTEN protein (arrow).

Please note: All products are 'FOR RESEARCH USE ONLY. NOT FOR USE IN DIAGNOSTIC OR THERAPEUTIC PROCEDURES'.