

EXTL1 Antibody (C-term)

Affinity Purified Rabbit Polyclonal Antibody (Pab)

Catalog # AP18469b

Product Information

Application	WB, E
Primary Accession	Q92935
Other Accession	Q9JKV7 , NP_004446.2
Reactivity	Human, Mouse
Host	Rabbit
Clonality	Polyclonal
Isotype	Rabbit IgG
Clone Names	RB24590
Calculated MW	74697
Antigen Region	649-676

Additional Information

Gene ID	2134
Other Names	Exostosin-like 1, Exostosin-L, Glucuronosyl-N-acetylglucosaminyl-proteoglycan 4-alpha-N-acetylglucosaminyltransferase, Multiple exostosis-like protein, EXTL1, EXTL
Target/Specificity	This EXTL1 antibody is generated from rabbits immunized with a KLH conjugated synthetic peptide between 649-676 amino acids from the C-terminal region of human EXTL1.
Dilution	WB~~1:1000 E~~Use at an assay dependent concentration.
Format	Purified polyclonal antibody supplied in PBS with 0.09% (W/V) sodium azide. This antibody is purified through a protein A column, followed by peptide affinity purification.
Storage	Maintain refrigerated at 2-8°C for up to 2 weeks. For long term storage store at -20°C in small aliquots to prevent freeze-thaw cycles.
Precautions	EXTL1 Antibody (C-term) is for research use only and not for use in diagnostic or therapeutic procedures.

Protein Information

Name	EXTL1
Synonyms	EXTL

Function Glycosyltransferase required for the biosynthesis of heparan- sulfate (HS) (PubMed:[11390981](#)). Transfers N-acetyl-alpha-D-glucosamine to the nascent HS chain (GlcNAcT-II activity) (PubMed:[11390981](#)). Appears to lack GlcNAcT I and GlcAT-II activities (PubMed:[11390981](#)).

Cellular Location Endoplasmic reticulum membrane; Single-pass type II membrane protein

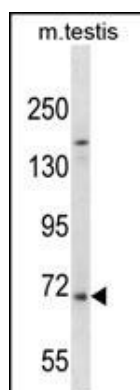
Background

This gene is a member of the multiple exostoses (EXT) family of glycosyltransferases, which function in the chain polymerization of heparan sulfate and heparin. The encoded protein harbors alpha 1,4-N-acetylglucosaminyltransferase activity, and is involved in chain elongation of heparan sulfate and possibly heparin.

References

Wu, C., et al. Proteomics 7(11):1775-1785(2007)
Mathysen, D., et al. Eur. J. Cancer 40(8):1255-1261(2004)
Zak, B.M., et al. Biochim. Biophys. Acta 1573(3):346-355(2002)
Kim, B.T., et al. Proc. Natl. Acad. Sci. U.S.A. 98(13):7176-7181(2001)
Xu, L., et al. Hum. Genet. 105 (1-2), 45-50 (1999) :

Images



EXTL1 Antibody (C-term) (Cat. #AP18469b) western blot analysis in mouse testis tissue lysates (35ug/lane). This demonstrates the EXTL1 antibody detected the EXTL1 protein (arrow).

Please note: All products are 'FOR RESEARCH USE ONLY. NOT FOR USE IN DIAGNOSTIC OR THERAPEUTIC PROCEDURES'.