

COG7 Antibody (C-term)

Affinity Purified Rabbit Polyclonal Antibody (Pab)

Catalog # AP18478b

Product Information

Application	WB, E
Primary Accession	P83436
Other Accession	NP_705831.1
Reactivity	Human, Mouse
Host	Rabbit
Clonality	Polyclonal
Isotype	Rabbit IgG
Clone Names	RB37109
Calculated MW	86344
Antigen Region	725-753

Additional Information

Gene ID	91949
Other Names	Conserved oligomeric Golgi complex subunit 7, COG complex subunit 7, Component of oligomeric Golgi complex 7, COG7
Target/Specificity	This COG7 antibody is generated from rabbits immunized with a KLH conjugated synthetic peptide between 725-753 amino acids from the C-terminal region of human COG7.
Dilution	WB~~1:1000 E~~Use at an assay dependent concentration.
Format	Purified polyclonal antibody supplied in PBS with 0.09% (W/V) sodium azide. This antibody is purified through a protein A column, followed by peptide affinity purification.
Storage	Maintain refrigerated at 2-8°C for up to 2 weeks. For long term storage store at -20°C in small aliquots to prevent freeze-thaw cycles.
Precautions	COG7 Antibody (C-term) is for research use only and not for use in diagnostic or therapeutic procedures.

Protein Information

Name	COG7
Function	Required for normal Golgi function.
Cellular Location	Golgi apparatus membrane; Peripheral membrane protein

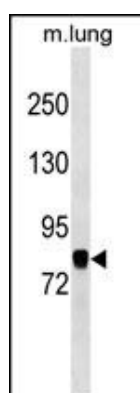
Background

The protein encoded by this gene resides in the golgi, and constitutes one of the 8 subunits of the conserved oligomeric Golgi (COG) complex, which is required for normal golgi morphology and localization. Mutations in this gene are associated with the congenital disorder of glycosylation type IIe.

References

Zeevaert, R., et al. Eur J Med Genet 52(5):303-305(2009)
Laufman, O., et al. EMBO J. 28(14):2006-2017(2009)
Morava, E., et al. Eur. J. Hum. Genet. 15(6):638-645(2007)
Steet, R., et al. Mol. Biol. Cell 17(5):2312-2321(2006)
Shestakova, A., et al. Traffic 7(2):191-204(2006)

Images



COG7 Antibody (C-term) (Cat. #AP18478b) western blot analysis in mouse lung tissue lysates (35ug/lane). This demonstrates the COG7 antibody detected the COG7 protein (arrow).

Please note: All products are 'FOR RESEARCH USE ONLY. NOT FOR USE IN DIAGNOSTIC OR THERAPEUTIC PROCEDURES'.