

PTGFRN Antibody (Center)

Affinity Purified Rabbit Polyclonal Antibody (Pab)

Catalog # AP18481c

Product Information

Application	WB, E
Primary Accession	Q9P2B2
Other Accession	NP_065173.2
Reactivity	Human, Mouse
Host	Rabbit
Clonality	Polyclonal
Isotype	Rabbit IgG
Clone Names	RB37534
Calculated MW	98556
Antigen Region	458-485

Additional Information

Gene ID	5738
Other Names	Prostaglandin F2 receptor negative regulator, CD9 partner 1, CD9P-1, Glu-Trp-Ile EWI motif-containing protein F, EWI-F, Prostaglandin F2-alpha receptor regulatory protein, Prostaglandin F2-alpha receptor-associated protein, CD315, PTGFRN, CD9P1, EWIF, FPRP, KIAA1436
Target/Specificity	This PTGFRN antibody is generated from rabbits immunized with a KLH conjugated synthetic peptide between 458-485 amino acids from the Central region of human PTGFRN.
Dilution	WB~~1:1000 E~~Use at an assay dependent concentration.
Format	Purified polyclonal antibody supplied in PBS with 0.05% (V/V) Proclin 300. This antibody is prepared by Saturated Ammonium Sulfate (SAS) precipitation followed by dialysis against PBS.
Storage	Maintain refrigerated at 2-8°C for up to 2 weeks. For long term storage store at -20°C in small aliquots to prevent freeze-thaw cycles.
Precautions	PTGFRN Antibody (Center) is for research use only and not for use in diagnostic or therapeutic procedures.

Protein Information

Name	PTGFRN
Synonyms	CD9P1, EWIF, FPRP, KIAA1436

Function	Inhibits the binding of prostaglandin F2-alpha (PGF2-alpha) to its specific FP receptor, by decreasing the receptor number rather than the affinity constant. Functional coupling with the prostaglandin F2-alpha receptor seems to occur (By similarity). In myoblasts, associates with tetraspanins CD9 and CD81 to prevent myotube fusion during muscle regeneration (By similarity).
Cellular Location	Endoplasmic reticulum membrane; Single-pass type I membrane protein. Golgi apparatus, trans-Golgi network membrane; Single-pass type I membrane protein

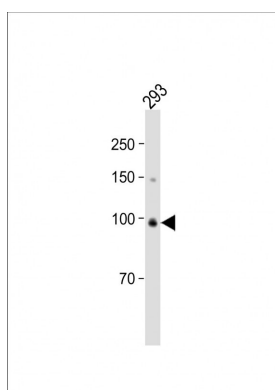
Background

PTGFRN inhibits the binding of prostaglandin F2-alpha (PGF2-alpha) to its specific FP receptor, by decreasing the receptor number rather than the affinity constant. Functional coupling with the prostaglandin F2-alpha receptor seems to occur (By similarity).

References

Ikeda, M., et al. Biol. Psychiatry 67(3):263-269(2010)
Andre, M., et al. J Proteomics 73(1):93-102(2009)
Andre, M., et al. Proteomics 7(21):3880-3895(2007)
Abache, T., et al. J. Cell. Biochem. 102(3):650-664(2007)
Sala-Valdes, M., et al. J. Biol. Chem. 281(28):19665-19675(2006)

Images



All lanes: Anti-PTGFRN Antibody (Center) at 1:1000 dilution + 293 whole cell lysate Lysates/proteins at 20 µg per lane. Secondary: Goat Anti-Rabbit IgG, (H+L), Peroxidase conjugated (ASP1615) at 1/15000 dilution. Observed band size: 99 KDa Blocking/Dilution buffer: 5% NFDM/TBST.

Please note: All products are 'FOR RESEARCH USE ONLY. NOT FOR USE IN DIAGNOSTIC OR THERAPEUTIC PROCEDURES'.