

POC1A Antibody (N-term)

Affinity Purified Rabbit Polyclonal Antibody (Pab)

Catalog # AP18491a

Product Information

| | |
|-------------------|--|
| Application | WB, E |
| Primary Accession | Q8NBT0 |
| Other Accession | Q8JZX3 , Q7ZVF0 , NP_001155052.1 |
| Reactivity | Human, Mouse |
| Predicted | Zebrafish |
| Host | Rabbit |
| Clonality | Polyclonal |
| Isotype | Rabbit IgG |
| Clone Names | RB37964 |
| Calculated MW | 45009 |
| Antigen Region | 34-61 |

Additional Information

| | |
|--------------------|--|
| Gene ID | 25886 |
| Other Names | POC1 centriolar protein homolog A, Pix2, Proteome of centriole protein 1A, WD repeat-containing protein 51A, POC1A, WDR51A |
| Target/Specificity | This POC1A antibody is generated from rabbits immunized with a KLH conjugated synthetic peptide between 34-61 amino acids from the N-terminal region of human POC1A. |
| Dilution | WB~~1:1000 E~~Use at an assay dependent concentration. |
| Format | Purified polyclonal antibody supplied in PBS with 0.09% (W/V) sodium azide. This antibody is purified through a protein A column, followed by peptide affinity purification. |
| Storage | Maintain refrigerated at 2-8°C for up to 2 weeks. For long term storage store at -20°C in small aliquots to prevent freeze-thaw cycles. |
| Precautions | POC1A Antibody (N-term) is for research use only and not for use in diagnostic or therapeutic procedures. |

Protein Information

| | |
|----------|--------|
| Name | POC1A |
| Synonyms | WDR51A |

| | |
|--------------------------|--|
| Function | Plays an important role in centriole assembly and/or stability and ciliogenesis. Involved in early steps of centriole duplication, as well as in the later steps of centriole length control. Acts in concert with POC1B to ensure centriole integrity and proper mitotic spindle formation. |
| Cellular Location | Cytoplasm, cytoskeleton, microtubule organizing center, centrosome. Cytoplasm, cytoskeleton, microtubule organizing center, centrosome, centriole Cytoplasm, cytoskeleton, cilium basal body. Cytoplasm, cytoskeleton, spindle pole. Note=Component of both mother and daughter centrioles |

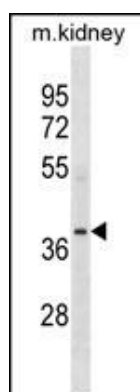
Background

The function of this protein remains unknown.

References

Keller, L.C., et al. Mol. Biol. Cell 20(4):1150-1166(2009)
Hames, R.S., et al. Exp. Cell Res. 314(3):574-589(2008)

Images



POC1A Antibody (N-term) (Cat. #AP18491a) western blot analysis in mouse kidney tissue lysates (35ug/lane). This demonstrates the POC1A antibody detected the POC1A protein (arrow).

Please note: All products are 'FOR RESEARCH USE ONLY. NOT FOR USE IN DIAGNOSTIC OR THERAPEUTIC PROCEDURES'.