

ZSWIM2 Antibody (C-term)

Affinity Purified Rabbit Polyclonal Antibody (Pab)

Catalog # AP18497b

Product Information

Application	WB, E
Primary Accession	Q8NEG5
Other Accession	NP_872327.2
Reactivity	Human
Host	Rabbit
Clonality	Polyclonal
Isotype	Rabbit IgG
Clone Names	RB38135
Calculated MW	72732
Antigen Region	435-462

Additional Information

Gene ID	151112
Other Names	E3 ubiquitin-protein ligase ZSWIM2, 632-, MEKK1-related protein X, MEX, ZZ-type zinc finger-containing protein 2, Zinc finger SWIM domain-containing protein 2, ZSWIM2, ZZZ2
Target/Specificity	This ZSWIM2 antibody is generated from rabbits immunized with a KLH conjugated synthetic peptide between 435-462 amino acids from the C-terminal region of human ZSWIM2.
Dilution	WB~~1:1000 E~~Use at an assay dependent concentration.
Format	Purified polyclonal antibody supplied in PBS with 0.09% (W/V) sodium azide. This antibody is purified through a protein A column, followed by peptide affinity purification.
Storage	Maintain refrigerated at 2-8°C for up to 2 weeks. For long term storage store at -20°C in small aliquots to prevent freeze-thaw cycles.
Precautions	ZSWIM2 Antibody (C-term) is for research use only and not for use in diagnostic or therapeutic procedures.

Protein Information

Name	ZSWIM2 (HGNC:30990)
Synonyms	ZZZ2

Function	E3 ubiquitin-protein ligase involved in the regulation of Fas-, DR3- and DR4-mediated apoptosis. Functions in conjunction with the UBE2D1, UBE2D3 and UBE2E1 E2 ubiquitin-conjugating enzymes.
Tissue Location	Expression is testis-specific.

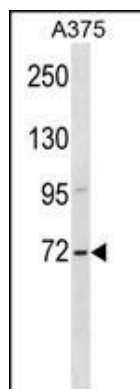
Background

E3 ubiquitin-protein ligase involved in the regulation of Fas-, DR3-and DR4-mediated apoptosis. Functions in conjunction with the UBE2D1, UBE2D3 and UBE2E1 E2 ubiquitin-conjugating enzymes (By similarity).

References

Rose, J.E., et al. Mol. Med. 16 (7-8), 247-253 (2010) :
Yoshida, T., et al. Int. J. Mol. Med. 25(4):649-656(2010)
Oguri, M., et al. Am. J. Hypertens. 23(1):70-77(2010)
Nishito, Y., et al. Biochem. J. 396(3):411-417(2006)

Images



ZSWIM2 Antibody (C-term) (Cat. #AP18497b) western blot analysis in A375 cell line lysates (35ug/lane). This demonstrates the ZSWIM2 antibody detected the ZSWIM2 protein (arrow).

Please note: All products are 'FOR RESEARCH USE ONLY. NOT FOR USE IN DIAGNOSTIC OR THERAPEUTIC PROCEDURES'.