

# BRP16 Antibody (Center)

Affinity Purified Rabbit Polyclonal Antibody (Pab)

Catalog # AP18500c

## Product Information

---

Application	WB, E
Primary Accession	<a href="#">Q9BTY7</a>
Other Accession	<a href="#">P0CB43</a> , <a href="#">NP_057542.2</a>
Reactivity	Human, Mouse
Host	Rabbit
Clonality	Polyclonal
Isotype	Rabbit IgG
Clone Names	RB38155
Calculated MW	42129
Antigen Region	254-280

## Additional Information

---

Gene ID	51236
Other Names	Protein HGH1 homolog, HGH1, C8orf30A, C8orf30B, FAM203A, FAM203B
Target/Specificity	This BRP16 antibody is generated from rabbits immunized with a KLH conjugated synthetic peptide between 254-280 amino acids from the Central region of human BRP16.
Dilution	WB~~1:1000 E~~Use at an assay dependent concentration.
Format	Purified polyclonal antibody supplied in PBS with 0.09% (W/V) sodium azide. This antibody is purified through a protein A column, followed by peptide affinity purification.
Storage	Maintain refrigerated at 2-8°C for up to 2 weeks. For long term storage store at -20°C in small aliquots to prevent freeze-thaw cycles.
Precautions	BRP16 Antibody (Center) is for research use only and not for use in diagnostic or therapeutic procedures.

## Protein Information

---

Name	HGH1
Synonyms	C8orf30A, C8orf30B, FAM203A, FAM203B

## Background

---

The function of this protein remains unknown.

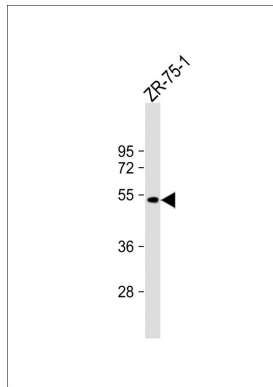
## References

---

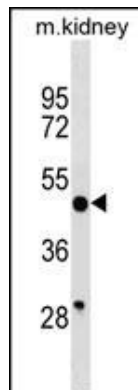
Stelzl, U., et al. Cell 122(6):957-968(2005)

## Images

---



Anti-BRP16 Antibody (Center) at 1:1000 dilution + ZR-75-1 whole cell lysate Lysates/proteins at 20 µg per lane. Secondary Goat Anti-Rabbit IgG, (H+L), Peroxidase conjugated at 1/10000 dilution. Predicted band size : 42 kDa Blocking/Dilution buffer: 5% NFDM/TBST.



BRP16 Antibody (Center) (Cat. #AP18500c) western blot analysis in mouse kidney tissue lysates (35ug/lane). This demonstrates the BRP16 antibody detected the BRP16 protein (arrow).

Please note: All products are 'FOR RESEARCH USE ONLY. NOT FOR USE IN DIAGNOSTIC OR THERAPEUTIC PROCEDURES'.