

OR2W1 Antibody (C-term)

Affinity Purified Rabbit Polyclonal Antibody (Pab)

Catalog # AP18506b

Product Information

Application	WB, E
Primary Accession	Q9Y3N9
Other Accession	NP_112165.1
Reactivity	Human
Host	Rabbit
Clonality	Polyclonal
Isotype	Rabbit IgG
Clone Names	RB38320
Calculated MW	36101
Antigen Region	245-272

Additional Information

Gene ID	26692
Other Names	Olfactory receptor 2W1, Hs6M1-15, Olfactory receptor OR6-13, OR2W1
Target/Specificity	This OR2W1 antibody is generated from rabbits immunized with a KLH conjugated synthetic peptide between 245-272 amino acids from the C-terminal region of human OR2W1.
Dilution	WB~~1:1000 E~~Use at an assay dependent concentration.
Format	Purified polyclonal antibody supplied in PBS with 0.09% (W/V) sodium azide. This antibody is purified through a protein A column, followed by peptide affinity purification.
Storage	Maintain refrigerated at 2-8°C for up to 2 weeks. For long term storage store at -20°C in small aliquots to prevent freeze-thaw cycles.
Precautions	OR2W1 Antibody (C-term) is for research use only and not for use in diagnostic or therapeutic procedures.

Protein Information

Name	OR2W1
Function	Odorant receptor.
Cellular Location	Cell membrane; Multi-pass membrane protein.

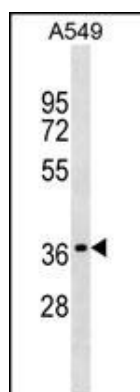
Background

Olfactory receptors interact with odorant molecules in the nose, to initiate a neuronal response that triggers the perception of a smell. The olfactory receptor proteins are members of a large family of G-protein-coupled receptors (GPCR) arising from single coding-exon genes. Olfactory receptors share a 7-transmembrane domain structure with many neurotransmitter and hormone receptors and are responsible for the recognition and G protein-mediated transduction of odorant signals. The olfactory receptor gene family is the largest in the genome. The nomenclature assigned to the olfactory receptor genes and proteins for this organism is independent of other organisms.

References

Barcellos, L.F., et al. PLoS Genet. 5 (10), E1000696 (2009) :
Malnic, B., et al. Proc. Natl. Acad. Sci. U.S.A. 101(8):2584-2589(2004)
Mungall, A.J., et al. Nature 425(6960):805-811(2003)
Fuchs, T., et al. Genomics 80(3):295-302(2002)

Images



OR2W1 Antibody (C-term) (Cat. #AP18506b) western blot analysis in A549 cell line lysates (35ug/lane). This demonstrates the OR2W1 antibody detected the OR2W1 protein (arrow).

Please note: All products are 'FOR RESEARCH USE ONLY. NOT FOR USE IN DIAGNOSTIC OR THERAPEUTIC PROCEDURES'.