

FRMD3 Antibody (Center)

Affinity Purified Rabbit Polyclonal Antibody (Pab)

Catalog # AP18521c

Product Information

Application	WB, E
Primary Accession	A2A2Y4
Other Accession	NP_777598.3
Reactivity	Human
Host	Rabbit
Clonality	Polyclonal
Isotype	Rabbit IgG
Clone Names	RB38459
Calculated MW	68772
Antigen Region	250-279

Additional Information

Gene ID	257019
Other Names	FERM domain-containing protein 3, Band 41-like protein 40, Ovary type protein 41, 41O, FRMD3, EPB41L4O
Target/Specificity	This FRMD3 antibody is generated from rabbits immunized with a KLH conjugated synthetic peptide between 250-279 amino acids from the Central region of human FRMD3.
Dilution	WB~~1:1000 E~~Use at an assay dependent concentration.
Format	Purified polyclonal antibody supplied in PBS with 0.09% (W/V) sodium azide. This antibody is purified through a protein A column, followed by peptide affinity purification.
Storage	Maintain refrigerated at 2-8°C for up to 2 weeks. For long term storage store at -20°C in small aliquots to prevent freeze-thaw cycles.
Precautions	FRMD3 Antibody (Center) is for research use only and not for use in diagnostic or therapeutic procedures.

Protein Information

Name	FRMD3
Synonyms	EPB41L4O
Function	Putative tumor suppressor gene that may be implicated in the origin and

progression of lung cancer.

Cellular Location	Membrane; Single-pass membrane protein
Tissue Location	Ovary-specific..

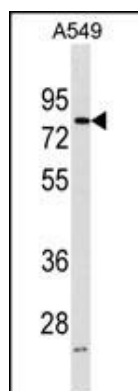
Background

Protein 4.1 of red blood cells, or 4.1R (EPB41; MIM 130500), is a multifunctional protein essential for maintaining erythrocyte shape and membrane mechanical properties. The protein 4.1 family comprises a group of structural proteins that includes, in addition to 4.1R, 4.1G (general type; MIM 603237), 4.1B (brain type; MIM 605331), 4.1N (neuron type; MIM 602879), and 4.1O (ovary type).

References

Maeda, S., et al. Diabetes (2010) In press :
Rose, J. Phd, et al. Mol. Med. (2010) In press :
Pezzolesi, M.G., et al. Diabetes 58(6):1403-1410(2009)
Haase, D., et al. Oncogene 26(30):4464-4468(2007)
Ni, X., et al. J. Hum. Genet. 48(2):101-106(2003)

Images



FRMD3 Antibody (Center) (Cat. #AP18521c) western blot analysis in A549 cell line lysates (35ug/lane). This demonstrates the FRMD3 antibody detected the FRMD3 protein (arrow).

Please note: All products are 'FOR RESEARCH USE ONLY. NOT FOR USE IN DIAGNOSTIC OR THERAPEUTIC PROCEDURES'.