

Erythropoietin Antibody

Affinity Purified Rabbit Polyclonal Antibody (Pab)

Catalog # AP18527a

Product Information

Application	WB, E
Primary Accession	P01588
Other Accession	NP_000790
Reactivity	Human, Rat, Mouse
Host	Rabbit
Clonality	Polyclonal
Isotype	Rabbit IgG
Clone Names	RB38489
Calculated MW	21307

Additional Information

Gene ID	2056
Other Names	Erythropoietin, Epoetin, EPO
Target/Specificity	This EPO antibody is generated from rabbits immunized with a recombinant protein of human EPO.
Dilution	WB~~1:1000 E~~Use at an assay dependent concentration.
Format	Purified polyclonal antibody supplied in PBS with 0.05% (V/V) Proclin 300. This antibody is purified through a protein A column, followed by peptide affinity purification.
Storage	Maintain refrigerated at 2-8°C for up to 2 weeks. For long term storage store at -20°C in small aliquots to prevent freeze-thaw cycles.
Precautions	Erythropoietin Antibody is for research use only and not for use in diagnostic or therapeutic procedures.

Protein Information

Name	EPO
Function	Hormone involved in the regulation of erythrocyte proliferation and differentiation and the maintenance of a physiological level of circulating erythrocyte mass (PubMed: 28283061). Binds to EPOR leading to EPOR dimerization and JAK2 activation thereby activating specific downstream effectors, including STAT1 and STAT3 (PubMed: 9774108).

Cellular Location	Secreted.
Tissue Location	Produced by kidney or liver of adult mammals and by liver of fetal or neonatal mammals.

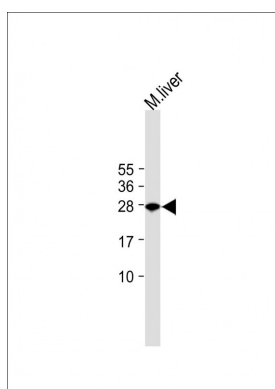
Background

This gene is a member of the EPO/TPO family and encodes a secreted, glycosylated cytokine composed of four alpha helical bundles. The protein is found in the plasma and regulates red cell production by promoting erythroid differentiation and initiating hemoglobin synthesis. This protein also has neuroprotective activity against a variety of potential brain injuries and antiapoptotic functions in several tissue types. [provided by RefSeq].

References

Bailey, S.D., et al. Diabetes Care 33(10):2250-2253(2010)
 Kristensen, P.L., et al. Eur. J. Endocrinol. 163(3):391-398(2010)
 Kim, M.H., et al. Mol. Biol. (Mosk.) 44(4):656-663(2010)
 Carraway, M.S., et al. Circ. Res. 106(11):1722-1730(2010)
 Shi, Z., et al. Mol. Cancer Res. 8(4):615-626(2010)

Images



All lanes : Anti-Erythropoietin Antibody at 1:500 dilution
 Lane 1: mouse liver whole cell lysate Lysates/proteins at 20 µg per lane. Secondary Goat Anti-Rabbit IgG, (H+L), Peroxidase conjugated at 1/10000 dilution. Observed band size : 25kDa Blocking/Dilution buffer: 5% NFDm/TBST.

Please note: All products are 'FOR RESEARCH USE ONLY. NOT FOR USE IN DIAGNOSTIC OR THERAPEUTIC PROCEDURES'.