

ERLIN2 Antibody (C-term)

Affinity Purified Rabbit Polyclonal Antibody (Pab)

Catalog # AP18538b

Product Information

Application	WB, E
Primary Accession	O94905
Other Accession	NP_001003790.1
Reactivity	Human, Rat, Mouse
Host	Rabbit
Clonality	Polyclonal
Isotype	Rabbit IgG
Clone Names	RB38591
Calculated MW	37840
Antigen Region	307-333

Additional Information

Gene ID	11160
Other Names	Erlin-2, Endoplasmic reticulum lipid raft-associated protein 2, Stomatin-prohibitin-flotillin-HflC/K domain-containing protein 2, SPFH domain-containing protein 2, ERLIN2, C8orf2, SPFH2
Target/Specificity	This ERLIN2 antibody is generated from rabbits immunized with a KLH conjugated synthetic peptide between 307-333 amino acids from the C-terminal region of human ERLIN2.
Dilution	WB~~1:2000 E~~Use at an assay dependent concentration.
Format	Purified polyclonal antibody supplied in PBS with 0.09% (W/V) sodium azide. This antibody is purified through a protein A column, followed by peptide affinity purification.
Storage	Maintain refrigerated at 2-8°C for up to 2 weeks. For long term storage store at -20°C in small aliquots to prevent freeze-thaw cycles.
Precautions	ERLIN2 Antibody (C-term) is for research use only and not for use in diagnostic or therapeutic procedures.

Protein Information

Name	ERLIN2
Synonyms	C8orf2, SPFH2

Function	Component of the ERLIN1/ERLIN2 complex which mediates the endoplasmic reticulum-associated degradation (ERAD) of inositol 1,4,5-trisphosphate receptors (IP3Rs) such as ITPR1 (PubMed: 17502376 , PubMed: 19240031). Promotes sterol-accelerated ERAD of HMGCR probably implicating an AMFR/gp78-containing ubiquitin ligase complex (PubMed: 21343306). Involved in regulation of cellular cholesterol homeostasis by regulation the SREBP signaling pathway. May promote ER retention of the SCAP-SREBF complex (PubMed: 24217618).
Cellular Location	Endoplasmic reticulum membrane; Single-pass type II membrane protein. Note=Associated with lipid raft-like domains of the endoplasmic reticulum membrane
Tissue Location	Ubiquitous..

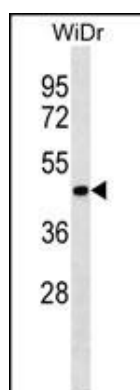
Background

Component of the ERLIN1/ERLIN2 complex which mediates the endoplasmic reticulum-associated degradation (ERAD) of inositol 1,4,5-trisphosphate receptors (IP3Rs). Also involved in ITPR1 degradation by the ERAD pathway.

References

Wang, Y., et al. Biochim. Biophys. Acta 1793(11):1710-1718(2009)
 Pearce, M.M., et al. J. Biol. Chem. 284(16):10433-10445(2009)
 Pearce, M.M., et al. J. Biol. Chem. 282(28):20104-20115(2007)
 Browman, D.T., et al. J. Cell. Sci. 119 (PT 15), 3149-3160 (2006) :
 Garcia, M.J., et al. Oncogene 24(33):5235-5245(2005)

Images



ERLIN2 Antibody (C-term) (Cat. #AP18538b) western blot analysis in WiDr cell line lysates (35ug/lane). This demonstrates the ERLIN2 antibody detected the ERLIN2 protein (arrow).

Please note: All products are 'FOR RESEARCH USE ONLY. NOT FOR USE IN DIAGNOSTIC OR THERAPEUTIC PROCEDURES'.