

ERMAP Antibody (N-term)

Affinity Purified Rabbit Polyclonal Antibody (Pab)

Catalog # AP18539a

Product Information

Application	WB, E
Primary Accession	Q96PL5
Other Accession	NP_001017922.1
Reactivity	Human
Host	Rabbit
Clonality	Polyclonal
Isotype	Rabbit IgG
Clone Names	RB38592
Calculated MW	52605
Antigen Region	69-95

Additional Information

Gene ID	114625
Other Names	Erythroid membrane-associated protein, hERMAP, Radin blood group antigen, Scianna blood group antigen, ERMAP, RD, SC
Target/Specificity	This ERMAP antibody is generated from rabbits immunized with a KLH conjugated synthetic peptide between 69-95 amino acids from the N-terminal region of human ERMAP.
Dilution	WB~~1:1000 E~~Use at an assay dependent concentration.
Format	Purified polyclonal antibody supplied in PBS with 0.09% (W/V) sodium azide. This antibody is purified through a protein A column, followed by peptide affinity purification.
Storage	Maintain refrigerated at 2-8°C for up to 2 weeks. For long term storage store at -20°C in small aliquots to prevent freeze-thaw cycles.
Precautions	ERMAP Antibody (N-term) is for research use only and not for use in diagnostic or therapeutic procedures.

Protein Information

Name	ERMAP
Synonyms	RD, SC
Function	Possible role as a cell-adhesion or receptor molecule of erythroid cells.

Cellular Location	Cell membrane; Single-pass type I membrane protein. Cytoplasm
Tissue Location	Expressed in erythroid-enriched bone marrow (at protein level). Highly expressed in bone marrow and to a lower extent in leukocytes, thymus, lymph node and spleen

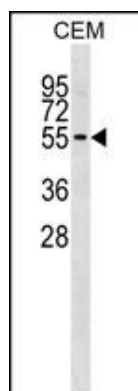
Background

The protein encoded by this gene is a cell surface transmembrane protein that may act as an erythroid cell receptor, possibly as a mediator of cell adhesion. Polymorphisms in this gene are responsible for the Scianna/Radin blood group system. Two transcript variants encoding the same protein have been found for this gene.

References

Fuchisawa, A., et al. Immunohematology 25(1):18-19(2009)
Lin, L.D., et al. Zhongguo Shi Yan Xue Ye Xue Za Zhi 16(2):328-332(2008)
Flegel, W.A., et al. Transfusion 45(12):1940-1944(2005)
Hue-Roye, K., et al. Transfusion 45(2):245-247(2005)
Yan, L., et al. Immunohematology 21(1):10-14(2005)

Images



ERMAP Antibody (N-term) (Cat. #AP18539a) western blot analysis in CEM cell line lysates (35ug/lane). This demonstrates the ERMAP antibody detected the ERMAP protein (arrow).

Please note: All products are 'FOR RESEARCH USE ONLY. NOT FOR USE IN DIAGNOSTIC OR THERAPEUTIC PROCEDURES'.