

NAAA Antibody (C-term)

Affinity Purified Rabbit Polyclonal Antibody (Pab)

Catalog # AP18542b

Product Information

Application	WB, E
Primary Accession	Q02083
Other Accession	NP_001035861.1
Reactivity	Human
Host	Rabbit
Clonality	Polyclonal
Isotype	Rabbit IgG
Clone Names	RB38604
Calculated MW	40066
Antigen Region	331-359

Additional Information

Gene ID	27163
Other Names	N-acylethanolamine-hydrolyzing acid amidase, 351-, Acid ceramidase-like protein, N-acylsphingosine amidohydrolase-like, ASAH-like protein, N-acylethanolamine-hydrolyzing acid amidase subunit alpha, N-acylethanolamine-hydrolyzing acid amidase subunit beta, NAAA, ASAHL, PLT
Target/Specificity	This NAAA antibody is generated from rabbits immunized with a KLH conjugated synthetic peptide between 331-359 amino acids from the C-terminal region of human NAAA.
Dilution	WB~~1:1000 E~~Use at an assay dependent concentration.
Format	Purified polyclonal antibody supplied in PBS with 0.09% (W/V) sodium azide. This antibody is purified through a protein A column, followed by peptide affinity purification.
Storage	Maintain refrigerated at 2-8°C for up to 2 weeks. For long term storage store at -20°C in small aliquots to prevent freeze-thaw cycles.
Precautions	NAAA Antibody (C-term) is for research use only and not for use in diagnostic or therapeutic procedures.

Protein Information

Name	NAAA {ECO:0000303 PubMed:30301806, ECO:0000312 HGNC:HGNC:736}
------	---

Function	Degrades bioactive fatty acid amides to their corresponding acids, with the following preference: N-palmitoylethanolamine > N- myristoylethanolamine > N-lauroylethanolamine = N-stearoylethanolamine > N-arachidonoyl ethanolamine > N-oleoylethanolamine (PubMed: 15655246 , PubMed: 17980170 , PubMed: 18793752 , PubMed: 22825852 , PubMed: 30301806). Also exhibits weak hydrolytic activity against the ceramides N- lauroylsphingosine and N-palmitoylsphingosine (PubMed: 15655246).
Cellular Location	Lysosome. Membrane; Peripheral membrane protein
Tissue Location	Expressed in numerous tissues, with highest levels in liver and kidney, followed by pancreas

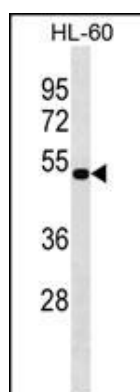
Background

This gene encodes an N-acyl ethanolamine-hydrolyzing enzyme which is highly similar to acid ceramidase. Multiple transcript variants encoding different isoforms have been found for this gene.

References

Wang, J., et al. J. Biochem. 144(5):685-690(2008)
Muller, T.D., et al. Child Adolesc Psychiatry Ment Health 2 (1), 33 (2008) :
Schulze, H., et al. Biol. Chem. 388(12):1333-1343(2007)
Zhao, L.Y., et al. Biochim. Biophys. Acta 1771(11):1397-1405(2007)
Oh, J.H., et al. Mamm. Genome 16(12):942-954(2005)

Images



NAAA Antibody (C-term) (Cat. #AP18542b) western blot analysis in HL-60 cell line lysates (35ug/lane). This demonstrates the NAAA antibody detected the NAAA protein (arrow).

Please note: All products are 'FOR RESEARCH USE ONLY. NOT FOR USE IN DIAGNOSTIC OR THERAPEUTIC PROCEDURES'.