

GG2L4 Antibody (Center)

Affinity Purified Rabbit Polyclonal Antibody (Pab)

Catalog # AP18551c

Product Information

Application	WB, E
Primary Accession	Q8N8X6
Reactivity	Human
Host	Rabbit
Clonality	Polyclonal
Isotype	Rabbit IgG
Clone Names	RB38788
Antigen Region	45-72

Additional Information

Other Names	Golgin subfamily A member 2-like protein 4;
Target/Specificity	This GG2L4 antibody is generated from rabbits immunized with a KLH conjugated synthetic peptide between 45-72 amino acids from the Central region of human GG2L4.
Dilution	WB~~1:1000 E~~Use at an assay dependent concentration.
Format	Purified polyclonal antibody supplied in PBS with 0.09% (W/V) sodium azide. This antibody is purified through a protein A column, followed by peptide affinity purification.
Storage	Maintain refrigerated at 2-8°C for up to 2 weeks. For long term storage store at -20°C in small aliquots to prevent freeze-thaw cycles.
Precautions	GG2L4 Antibody (Center) is for research use only and not for use in diagnostic or therapeutic procedures.

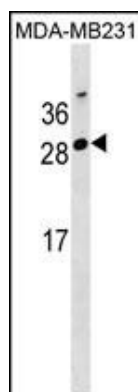
Protein Information

Background

The function of this protein remains unknown.

Images

GG2L4 Antibody (Center) (Cat. #AP18551c) western blot analysis in MDA-MB231 cell line lysates (35ug/lane).This



demonstrates the GG2L4 antibody detected the GG2L4 protein (arrow).

Please note: All products are 'FOR RESEARCH USE ONLY. NOT FOR USE IN DIAGNOSTIC OR THERAPEUTIC PROCEDURES'.