

# GOLGA6L9 Antibody (N-term)

Affinity Purified Rabbit Polyclonal Antibody (Pab)

Catalog # AP18553a

## Product Information

---

Application	WB, E
Primary Accession	<a href="#">A6NEM1</a>
Other Accession	<a href="#">A6NI86</a> , <a href="#">A6NFL8</a> , <a href="#">A6NEF3</a> , <a href="#">A6NEY3</a> , <a href="#">NP_937824.2</a>
Reactivity	Human
Host	Rabbit
Clonality	Polyclonal
Isotype	Rabbit IgG
Clone Names	RB38797
Calculated MW	49193
Antigen Region	15-41

## Additional Information

---

Gene ID	440295
Other Names	Golgin subfamily A member 6-like protein 9, GOLGA6L9
Target/Specificity	This GOLGA6L9 antibody is generated from rabbits immunized with a KLH conjugated synthetic peptide between 15-41 amino acids from the N-terminal region of human GOLGA6L9.
Dilution	WB~~1:1000 E~~Use at an assay dependent concentration.
Format	Purified polyclonal antibody supplied in PBS with 0.09% (W/V) sodium azide. This antibody is purified through a protein A column, followed by peptide affinity purification.
Storage	Maintain refrigerated at 2-8°C for up to 2 weeks. For long term storage store at -20°C in small aliquots to prevent freeze-thaw cycles.
Precautions	GOLGA6L9 Antibody (N-term) is for research use only and not for use in diagnostic or therapeutic procedures.

## Protein Information

---

Name	GOLGA6L9 ( <a href="#">HGNC:37229</a> )
------	---

## Background

---

The function of this protein remains unknown.

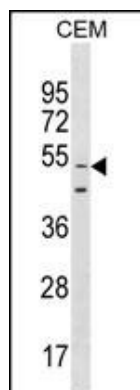
## References

---

Strausberg, R.L., et al. Proc. Natl. Acad. Sci. U.S.A. 99(26):16899-16903(2002)

## Images

---



GOLGA6L9 Antibody (N-term) (Cat. #AP18553a) western blot analysis in CEM cell line lysates (35ug/lane). This demonstrates the GOLGA6L9 antibody detected the GOLGA6L9 protein (arrow).

Please note: All products are 'FOR RESEARCH USE ONLY. NOT FOR USE IN DIAGNOSTIC OR THERAPEUTIC PROCEDURES'.