

HHCM Antibody (C-term)

Affinity Purified Rabbit Polyclonal Antibody (Pab)

Catalog # AP18571b

Product Information

Application	WB, E
Primary Accession	Q05877
Reactivity	Human
Host	Rabbit
Clonality	Polyclonal
Isotype	Rabbit IgG
Clone Names	RB30468
Antigen Region	341-368

Additional Information

Other Names	Hepatocellular carcinoma protein HHCM
Target/Specificity	This HHCM antibody is generated from rabbits immunized with a KLH conjugated synthetic peptide between 341-368 amino acids from the C-terminal region of human HHCM.
Dilution	WB~~1:1000 E~~Use at an assay dependent concentration.
Format	Purified polyclonal antibody supplied in PBS with 0.09% (W/V) sodium azide. This antibody is purified through a protein A column, followed by peptide affinity purification.
Storage	Maintain refrigerated at 2-8°C for up to 2 weeks. For long term storage store at -20°C in small aliquots to prevent freeze-thaw cycles.
Precautions	HHCM Antibody (C-term) is for research use only and not for use in diagnostic or therapeutic procedures.

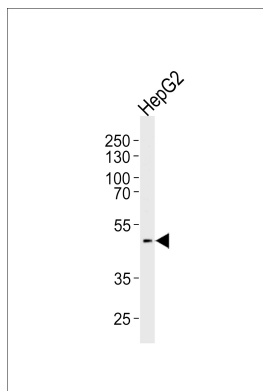
Protein Information

Background

The function of this protein remains unknown.

Images

Western blot analysis of lysate from HepG2 cell line, using HHCM Antibody (C-term)(Cat. #AP18571b). AP18571b was



diluted at 1:1000 at each lane. A goat anti-rabbit IgG H&L(HRP) at 1:5000 dilution was used as the secondary antibody. Lysate at 35ug per lane.

Please note: All products are 'FOR RESEARCH USE ONLY. NOT FOR USE IN DIAGNOSTIC OR THERAPEUTIC PROCEDURES'.