

# RAB40C Antibody (Center)

Affinity Purified Rabbit Polyclonal Antibody (Pab)

Catalog # AP18572c

## Product Information

---

Application	WB, E
Primary Accession	<a href="#">Q96S21</a>
Other Accession	<a href="#">Q8VHQ4</a> , <a href="#">NP_001166134.1</a>
Reactivity	Human, Mouse
Host	Rabbit
Clonality	Polyclonal
Isotype	Rabbit IgG
Clone Names	RB30479
Calculated MW	31304
Antigen Region	122-148

## Additional Information

---

Gene ID	57799
Other Names	Ras-related protein Rab-40C, Rar-like protein, Ras-like protein family member 8C, SOCS box-containing protein RAR3, RAB40C, RARL, RASL8C
Target/Specificity	This RAB40C antibody is generated from rabbits immunized with a KLH conjugated synthetic peptide between 122-148 amino acids from the Central region of human RAB40C.
Dilution	WB~~1:1000 E~~Use at an assay dependent concentration.
Format	Purified polyclonal antibody supplied in PBS with 0.09% (W/V) sodium azide. This antibody is purified through a protein A column, followed by peptide affinity purification.
Storage	Maintain refrigerated at 2-8°C for up to 2 weeks. For long term storage store at -20°C in small aliquots to prevent freeze-thaw cycles.
Precautions	RAB40C Antibody (Center) is for research use only and not for use in diagnostic or therapeutic procedures.

## Protein Information

---

Name	RAB40C ( <a href="#">HGNC:18285</a> )
Synonyms	RARL, RASL8C
Function	RAB40C small GTPase acts as substrate-recognition component of the

ECS(RAB40C) E3 ubiquitin ligase complex which mediates the ubiquitination and subsequent proteasomal degradation of target proteins (PubMed:[15601820](#), PubMed:[35512830](#)). The Rab40 subfamily belongs to the Rab family that are key regulators of intracellular membrane trafficking, from the formation of transport vesicles to their fusion with membranes. Rabs cycle between an inactive GDP-bound form and an active GTP-bound form that is able to recruit to membranes different sets of downstream effectors directly responsible for vesicle formation, movement, tethering and fusion (PubMed:[29156729](#)). As part of the ECS(RAB40C) complex, mediates ANKRD28 ubiquitination and degradation, thereby inhibiting protein phosphatase 6 (PP6) complex activity and focal adhesion assembly during cell migration (PubMed:[35512830](#)). Also negatively regulate lipid droplets accumulation in a GTP-dependent manner (PubMed:[29156729](#)).

#### Cellular Location

Cell membrane; Lipid-anchor; Cytoplasmic side. Cytoplasm, cytosol. Golgi apparatus membrane. Note=Mostly localized in the cytosol and also with actin ruffles.

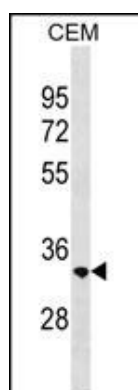
## Background

Probable substrate-recognition component of a SCF-like ECS (Elongin-Cullin-SOCS-box protein) E3 ubiquitin ligase complex which mediates the ubiquitination and subsequent proteasomal degradation of target proteins.

## References

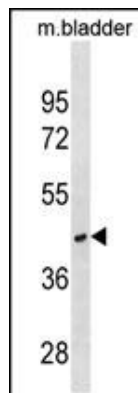
Ng, E.L., et al. Brain Res Rev 58(1):236-246(2008)  
Lettre, G., et al. Nat. Genet. 40(5):584-591(2008)  
Martin, J., et al. Nature 432(7020):988-994(2004)  
Kile, B.T., et al. Trends Biochem. Sci. 27(5):235-241(2002)  
Pereira-Leal, J.B., et al. J. Mol. Biol. 313(4):889-901(2001)

## Images



RAB40C Antibody (Center) (Cat. #AP18572c) western blot analysis in CEM cell line lysates (35ug/lane). This demonstrates the RAB40C antibody detected the RAB40C protein (arrow).

RAB40C Antibody (Center) (Cat. #AP18572c) western blot analysis in mouse bladder tissue lysates (35ug/lane). This demonstrates the RAB40C antibody detected the RAB40C protein (arrow).



Please note: All products are 'FOR RESEARCH USE ONLY. NOT FOR USE IN DIAGNOSTIC OR THERAPEUTIC PROCEDURES'.