

THOC6 Antibody (Center)

Affinity Purified Rabbit Polyclonal Antibody (Pab)

Catalog # AP18586c

Product Information

Application	WB, E
Primary Accession	Q86W42
Other Accession	Q6AY87 , Q5U4D9 , NP_001135822.1
Reactivity	Human, Mouse
Predicted	Rat
Host	Rabbit
Clonality	Polyclonal
Isotype	Rabbit IgG
Clone Names	RB38031
Calculated MW	37535
Antigen Region	96-123

Additional Information

Gene ID	79228
Other Names	THO complex subunit 6 homolog, Functional spliceosome-associated protein 35, fSAP35, WD repeat-containing protein 58, THOC6, WDR58
Target/Specificity	This THOC6 antibody is generated from rabbits immunized with a KLH conjugated synthetic peptide between 96-123 amino acids from the Central region of human THOC6.
Dilution	WB~~1:1000 E~~Use at an assay dependent concentration.
Format	Purified polyclonal antibody supplied in PBS with 0.09% (W/V) sodium azide. This antibody is purified through a protein A column, followed by peptide affinity purification.
Storage	Maintain refrigerated at 2-8°C for up to 2 weeks. For long term storage store at -20°C in small aliquots to prevent freeze-thaw cycles.
Precautions	THOC6 Antibody (Center) is for research use only and not for use in diagnostic or therapeutic procedures.

Protein Information

Name	THOC6
Synonyms	WDR58

Function

Component of the THO subcomplex of the TREX complex which is thought to couple mRNA transcription, processing and nuclear export, and which specifically associates with spliced mRNA and not with unspliced pre-mRNA (PubMed:[15833825](#), PubMed:[15998806](#), PubMed:[17190602](#)). Plays a key structural role in the oligomerization of the THO-DDX39B complex (PubMed:[33191911](#)). TREX is recruited to spliced mRNAs by a transcription-independent mechanism, binds to mRNA upstream of the exon-junction complex (EJC) and is recruited in a splicing- and cap- dependent manner to a region near the 5' end of the mRNA where it functions in mRNA export to the cytoplasm via the TAP/NXF1 pathway (PubMed:[15998806](#), PubMed:[17190602](#)). Plays a role in apoptosis negative control involved in brain development (PubMed:[15833825](#), PubMed:[23621916](#)).

Cellular Location

Nucleus. Nucleus speckle

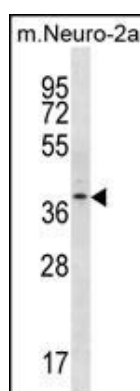
Background

Component of the THO subcomplex of the TREX complex. The TREX complex specifically associates with spliced mRNA and not with unspliced pre-mRNA. It is recruited to spliced mRNAs by a transcription-independent mechanism. Binds to mRNA upstream of the exon-junction complex (EJC) and is recruited in a splicing-and cap-dependent manner to a region near the 5' end of the mRNA where it functions in mRNA export. The recruitment occurs via an interaction between THOC4 and the cap-binding protein NCBP1. UAP56 functions as a bridge between THOC4 and the THO complex. The TREX complex is essential for the export of Kaposi's sarcoma-associated herpesvirus (KSHV) intronless mRNAs and infectious virus production. The recruitment of the TREX complex to the intronless viral mRNA occurs via an interaction between KSHV ORF57 protein and THOC4.

References

Bailey, S.D., et al. Diabetes Care 33(10):2250-2253(2010)
Hosgood, H.D. III, et al. Occup Environ Med 66(12):848-853(2009)
Talmud, P.J., et al. Am. J. Hum. Genet. 85(5):628-642(2009)
Boyne, J.R., et al. PLoS Pathog. 4 (10), E1000194 (2008) :
Cheng, H., et al. Cell 127(7):1389-1400(2006)

Images



THOC6 Antibody (Center) (Cat. #AP18586c) western blot analysis in mouse Neuro-2a cell line lysates (35ug/lane). This demonstrates the THOC6 antibody detected the THOC6 protein (arrow).

Please note: All products are 'FOR RESEARCH USE ONLY. NOT FOR USE IN DIAGNOSTIC OR THERAPEUTIC PROCEDURES'.