

CNPY3 Antibody (N-term)

Affinity Purified Rabbit Polyclonal Antibody (Pab)

Catalog # AP18622a

Product Information

Application	WB, E
Primary Accession	Q9BT09
Other Accession	NP_006577.2
Reactivity	Human
Host	Rabbit
Clonality	Polyclonal
Isotype	Rabbit IgG
Clone Names	RB30440
Calculated MW	30748
Antigen Region	66-92

Additional Information

Gene ID	10695
Other Names	Protein canopy homolog 3, CTG repeat protein 4a, Expanded repeat-domain protein CAG/CTG 5, Protein associated with TLR4, Trinucleotide repeat-containing gene 5 protein, CNPY3, CTG4A, ERDA5, PRAT4A, TNRC5
Target/Specificity	This CNPY3 antibody is generated from rabbits immunized with a KLH conjugated synthetic peptide between 66-92 amino acids from the N-terminal region of human CNPY3.
Dilution	WB~~1:1000 E~~Use at an assay dependent concentration.
Format	Purified polyclonal antibody supplied in PBS with 0.09% (W/V) sodium azide. This antibody is purified through a protein A column, followed by peptide affinity purification.
Storage	Maintain refrigerated at 2-8°C for up to 2 weeks. For long term storage store at -20°C in small aliquots to prevent freeze-thaw cycles.
Precautions	CNPY3 Antibody (N-term) is for research use only and not for use in diagnostic or therapeutic procedures.

Protein Information

Name	CNPY3
Synonyms	CTG4A, ERDA5, PRAT4A, TNRC5

Function	Toll-like receptor (TLR)-specific co-chaperone for HSP90B1. Required for proper TLR folding, except that of TLR3, and hence controls TLR exit from the endoplasmic reticulum. Consequently, required for both innate and adaptive immune responses (By similarity).
Cellular Location	Endoplasmic reticulum.

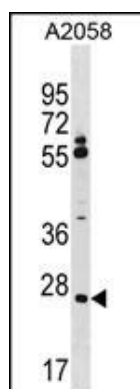
Background

PRAT4A is associated with the immature form of TLR4 (MIM 603030) and regulates its cell surface expression (Wakabayashi et al., 2006 [PubMed 16849487]).

References

Wakabayashi, Y., et al. J. Immunol. 177(3):1772-1779(2006)
 Clark, H.F., et al. Genome Res. 13(10):2265-2270(2003)
 Zhang, H., et al. Nat. Biotechnol. 21(6):660-666(2003)
 Zhang, H., et al. Nat. Biotechnol. 21(6):660-666(2003)
 Margolis, R.L., et al. Hum. Genet. 100(1):114-122(1997)

Images



CNPY3 Antibody (N-term) (Cat. #AP18622a) western blot analysis in A2058 cell line lysates (35ug/lane). This demonstrates the CNPY3 antibody detected the CNPY3 protein (arrow).

Please note: All products are 'FOR RESEARCH USE ONLY. NOT FOR USE IN DIAGNOSTIC OR THERAPEUTIC PROCEDURES'.