

# ACBD6 Antibody (N-term)

Affinity Purified Rabbit Polyclonal Antibody (Pab)

Catalog # AP18623a

## Product Information

---

<b>Application</b>	WB, E
<b>Primary Accession</b>	<a href="#">Q9BR61</a>
<b>Other Accession</b>	<a href="#">Q4V869</a> , <a href="#">Q5RJK8</a> , <a href="#">A2VDR2</a> , <a href="#">NP_115736.1</a>
<b>Reactivity</b>	Human
<b>Predicted</b>	Bovine, Rat, Xenopus
<b>Host</b>	Rabbit
<b>Clonality</b>	Polyclonal
<b>Isotype</b>	Rabbit IgG
<b>Clone Names</b>	RB30449
<b>Calculated MW</b>	31151
<b>Antigen Region</b>	52-78

## Additional Information

---

<b>Gene ID</b>	84320
<b>Other Names</b>	Acyl-CoA-binding domain-containing protein 6, ACBD6
<b>Target/Specificity</b>	This ACBD6 antibody is generated from rabbits immunized with a KLH conjugated synthetic peptide between 52-78 amino acids from the N-terminal region of human ACBD6.
<b>Dilution</b>	WB~~1:1000 E~~Use at an assay dependent concentration.
<b>Format</b>	Purified polyclonal antibody supplied in PBS with 0.09% (W/V) sodium azide. This antibody is purified through a protein A column, followed by peptide affinity purification.
<b>Storage</b>	Maintain refrigerated at 2-8°C for up to 2 weeks. For long term storage store at -20°C in small aliquots to prevent freeze-thaw cycles.
<b>Precautions</b>	ACBD6 Antibody (N-term) is for research use only and not for use in diagnostic or therapeutic procedures.

## Protein Information

---

<b>Name</b>	ACBD6
<b>Function</b>	Binds long-chain acyl-coenzyme A molecules with a strong preference for unsaturated C18:1-CoA, lower affinity for unsaturated C20:4-CoA, and very weak affinity for saturated C16:0-CoA. Does not bind fatty acids. Plays a role

in protein N-myristoylation (PubMed:[37951597](#)).

**Cellular Location**

Cytoplasm. Nucleus

**Tissue Location**

Detected in placenta and spleen (at protein level). Detected in placenta, umbilical cord blood, CD34-positive hematopoietic progenitor cells and bone marrow.

## Background

---

ACBD6 binds long-chain acyl-coenzyme A molecules with a strong preference for unsaturated C18:1-CoA, lower affinity for unsaturated C20:4-CoA, and very weak affinity for saturated C16:0-CoA. Does not bind fatty acids.

## References

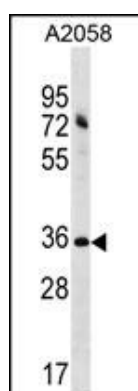
---

Rose, J.E., et al. Mol. Med. 16 (7-8), 247-253 (2010) :

Soupene, E., et al. J. Lipid Res. 49(5):1103-1112(2008)

## Images

---



ACBD6 Antibody (N-term) (Cat. #AP18623a) western blot analysis in A2058 cell line lysates (35ug/lane). This demonstrates the ACBD6 antibody detected the ACBD6 protein (arrow).

Please note: All products are 'FOR RESEARCH USE ONLY. NOT FOR USE IN DIAGNOSTIC OR THERAPEUTIC PROCEDURES'.