

GIPC2 Antibody (C-term)

Affinity Purified Rabbit Polyclonal Antibody (Pab)

Catalog # AP18639b

Product Information

Application	WB, E
Primary Accession	Q8TF65
Other Accession	NP_060125.4
Reactivity	Human
Host	Rabbit
Clonality	Polyclonal
Isotype	Rabbit IgG
Clone Names	RB37324
Calculated MW	34354
Antigen Region	252-279

Additional Information

Gene ID	54810
Other Names	PDZ domain-containing protein GIPC2, GIPC2
Target/Specificity	This GIPC2 antibody is generated from rabbits immunized with a KLH conjugated synthetic peptide between 252-279 amino acids from the C-terminal region of human GIPC2.
Dilution	WB~~1:1000 E~~Use at an assay dependent concentration.
Format	Purified polyclonal antibody supplied in PBS with 0.09% (W/V) sodium azide. This antibody is purified through a protein A column, followed by peptide affinity purification.
Storage	Maintain refrigerated at 2-8°C for up to 2 weeks. For long term storage store at -20°C in small aliquots to prevent freeze-thaw cycles.
Precautions	GIPC2 Antibody (C-term) is for research use only and not for use in diagnostic or therapeutic procedures.

Protein Information

Name	GIPC2
Cellular Location	Cytoplasm.
Tissue Location	Expressed at highest levels in ascending colon and at moderate levels in adult kidney. Expressed at low levels in adult pancreas and at very low levels in

adult liver. Expression is down-regulated in several primary tumors, such as kidney, colon and rectal tumors.

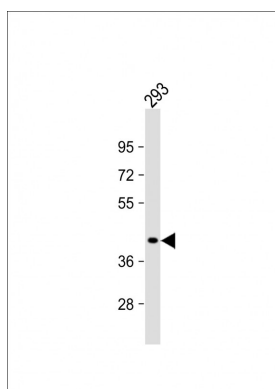
Background

The function of this protein is unknown.

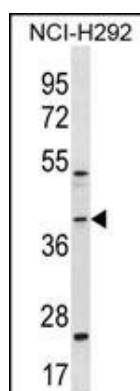
References

Vieira, A.R., et al. Genet. Med. 10(9):668-674(2008)
Lamesch, P., et al. Genomics 89(3):307-315(2007)
Stelzl, U., et al. Cell 122(6):957-968(2005)
Katoh, M. Int. J. Mol. Med. 9(6):585-589(2002)
Kirikoshi, H., et al. Int. J. Oncol. 20(3):571-576(2002)

Images



Anti-GIPC2 Antibody (C-term) at 1:1000 dilution + 293 whole cell lysates/proteins at 20 µg per lane. Secondary Goat Anti-Rabbit IgG, (H+L), Peroxidase conjugated at 1/10000 dilution. Predicted band size : 34 kDa Blocking/Dilution buffer: 5% NFDM/TBST.



GIPC2 Antibody (C-term) (Cat. #AP18639b) western blot analysis in NCI-H292 cell line lysates (35ug/lane). This demonstrates the GIPC2 antibody detected the GIPC2 protein (arrow).

Please note: All products are 'FOR RESEARCH USE ONLY. NOT FOR USE IN DIAGNOSTIC OR THERAPEUTIC PROCEDURES'.