

KBTBD7 Antibody (Center)

Affinity Purified Rabbit Polyclonal Antibody (Pab)

Catalog # AP18640c

Product Information

Application	WB, E
Primary Accession	Q8WVZ9
Other Accession	Q86V97 , NP_115514.2
Reactivity	Human
Host	Rabbit
Clonality	Polyclonal
Isotype	Rabbit IgG
Clone Names	RB37332
Calculated MW	77163
Antigen Region	428-455

Additional Information

Gene ID	84078
Other Names	Kelch repeat and BTB domain-containing protein 7, KBTBD7
Target/Specificity	This KBTBD7 antibody is generated from rabbits immunized with a KLH conjugated synthetic peptide between 428-455 amino acids from the Central region of human KBTBD7.
Dilution	WB~~1:1000 E~~Use at an assay dependent concentration.
Format	Purified polyclonal antibody supplied in PBS with 0.09% (W/V) sodium azide. This antibody is purified through a protein A column, followed by peptide affinity purification.
Storage	Maintain refrigerated at 2-8°C for up to 2 weeks. For long term storage store at -20°C in small aliquots to prevent freeze-thaw cycles.
Precautions	KBTBD7 Antibody (Center) is for research use only and not for use in diagnostic or therapeutic procedures.

Protein Information

Name	KBTBD7 (HGNC:25266)
Function	As part of the CUL3(KBTBD6/7) E3 ubiquitin ligase complex functions as a substrate adapter for the RAC1 guanine exchange factor (GEF) TIAM1, mediating its 'Lys-48' ubiquitination and proteasomal degradation (PubMed: 25684205). By controlling this ubiquitination, regulates RAC1 signal

transduction and downstream biological processes including the organization of the cytoskeleton, cell migration and cell proliferation (PubMed:[25684205](#)). Ubiquitination of TIAM1 requires the membrane-associated protein GABARAP which may restrict locally the activity of the complex (PubMed:[25684205](#)).

Cellular Location Cytoplasm. Nucleus

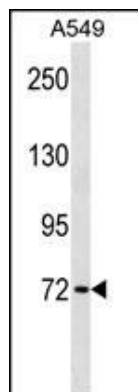
Background

The function of this protein is unknown.

References

Hu, J., et al. BMB Rep 43(1):17-22(2010)
Stelzl, U., et al. Cell 122(6):957-968(2005)

Images



KBTBD7 Antibody (Center) (Cat. #AP18640c) western blot analysis in A549 cell line lysates (35ug/lane). This demonstrates the KBTBD7 antibody detected the KBTBD7 protein (arrow).

Please note: All products are 'FOR RESEARCH USE ONLY. NOT FOR USE IN DIAGNOSTIC OR THERAPEUTIC PROCEDURES'.