

## MRPL40 Antibody (C-term)

Affinity Purified Rabbit Polyclonal Antibody (Pab)

Catalog # AP18646b

### Product Information

---

Application	WB, E
Primary Accession	<a href="#">Q9NQ50</a>
Other Accession	<a href="#">NP_003767.2</a>
Reactivity	Human
Host	Rabbit
Clonality	Polyclonal
Isotype	Rabbit IgG
Clone Names	RB37341
Calculated MW	24490
Antigen Region	172-200

### Additional Information

---

Gene ID	64976
Other Names	39S ribosomal protein L40, mitochondrial, L40mt, MRP-L40, Nuclear localization signal-containing protein deleted in velocardiofacial syndrome, Up-regulated in metastasis, MRPL40, NLVCF, URIM
Target/Specificity	This MRPL40 antibody is generated from rabbits immunized with a KLH conjugated synthetic peptide between 172-200 amino acids from the C-terminal region of human MRPL40.
Dilution	WB~~1:1000 E~~Use at an assay dependent concentration.
Format	Purified polyclonal antibody supplied in PBS with 0.09% (W/V) sodium azide. This antibody is purified through a protein A column, followed by peptide affinity purification.
Storage	Maintain refrigerated at 2-8°C for up to 2 weeks. For long term storage store at -20°C in small aliquots to prevent freeze-thaw cycles.
Precautions	MRPL40 Antibody (C-term) is for research use only and not for use in diagnostic or therapeutic procedures.

### Protein Information

---

Name	MRPL40
Synonyms	NLVCF, URIM

**Cellular Location** Mitochondrion

**Tissue Location** Ubiquitous..

## Background

---

Mammalian mitochondrial ribosomal proteins are encoded by nuclear genes and help in protein synthesis within the mitochondrion. Mitochondrial ribosomes (mitoribosomes) consist of a small 28S subunit and a large 39S subunit. They have an estimated 75% protein to rRNA composition compared to prokaryotic ribosomes, where this ratio is reversed. Another difference between mammalian mitoribosomes and prokaryotic ribosomes is that the latter contain a 5S rRNA. Among different species, the proteins comprising the mitoribosome differ greatly in sequence, and sometimes in biochemical properties, which prevents easy recognition by sequence homology. This gene encodes a 39S subunit protein. Deletions in this gene may contribute to the etiology of velo-cardio-facial syndrome and DiGeorge syndrome.

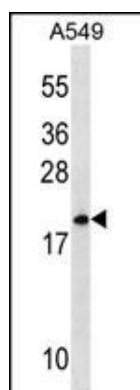
## References

---

Collins, J.E., et al. Genome Biol. 5 (10), R84 (2004) :  
Zhang, Z., et al. Genomics 81(5):468-480(2003)  
Kenmochi, N., et al. Genomics 77 (1-2), 65-70 (2001) :  
Hildebrandt, T., et al. Anticancer Res. 19 (1A), 525-530 (1999) :  
Goldschmidt-Reisin, S., et al. J. Biol. Chem. 273(52):34828-34836(1998)

## Images

---



MRPL40 Antibody (C-term) (Cat. #AP18646b) western blot analysis in A549 cell line lysates (35ug/lane). This demonstrates the MRPL40 antibody detected the MRPL40 protein (arrow).

Please note: All products are 'FOR RESEARCH USE ONLY. NOT FOR USE IN DIAGNOSTIC OR THERAPEUTIC PROCEDURES'.