

MYL6B Antibody (Center)

Affinity Purified Rabbit Polyclonal Antibody (Pab)

Catalog # AP18648c

Product Information

Application	WB, E
Primary Accession	P14649
Other Accession	NP_002466.1
Reactivity	Human
Host	Rabbit
Clonality	Polyclonal
Isotype	Rabbit IgG
Clone Names	RB37348
Calculated MW	22764
Antigen Region	96-123

Additional Information

Gene ID	140465
Other Names	Myosin light chain 6B, Myosin light chain 1 slow-twitch muscle A isoform, MLC1sa, Smooth muscle and nonmuscle myosin light chain alkali 6B, MYL6B, MLC1SA
Target/Specificity	This MYL6B antibody is generated from rabbits immunized with a KLH conjugated synthetic peptide between 96-123 amino acids from the Central region of human MYL6B.
Dilution	WB~~1:1000 E~~Use at an assay dependent concentration.
Format	Purified polyclonal antibody supplied in PBS with 0.09% (W/V) sodium azide. This antibody is purified through a protein A column, followed by peptide affinity purification.
Storage	Maintain refrigerated at 2-8°C for up to 2 weeks. For long term storage store at -20°C in small aliquots to prevent freeze-thaw cycles.
Precautions	MYL6B Antibody (Center) is for research use only and not for use in diagnostic or therapeutic procedures.

Protein Information

Name	MYL6B
Synonyms	MLC1SA

Function

Regulatory light chain of myosin. Does not bind calcium.

Background

Myosin is a hexameric ATPase cellular motor protein. It is composed of two heavy chains, two nonphosphorylatable alkali light chains, and two phosphorylatable regulatory light chains. This gene encodes a myosin alkali light chain expressed in both slow-twitch skeletal muscle and in nonmuscle tissue.

References

Pathmanathan, S., et al. Mol. Cell. Biochem. 318 (1-2), 43-51 (2008) :

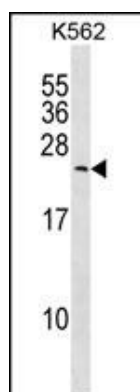
Coureux, P.D., et al. EMBO J. 23(23):4527-4537(2004)

Webb, R.C. Adv Physiol Educ 27 (1-4), 201-206 (2003) :

Komiyama, M., et al. J. Cell. Sci. 109 (PT 8), 2089-2099 (1996) :

Hailstones, D.L., et al. Mol. Cell. Biol. 10(3):1095-1104(1990)

Images



MYL6B Antibody (Center) (Cat. #AP18648c) western blot analysis in K562 cell line lysates (35ug/lane). This demonstrates the MYL6B antibody detected the MYL6B protein (arrow).

Please note: All products are 'FOR RESEARCH USE ONLY. NOT FOR USE IN DIAGNOSTIC OR THERAPEUTIC PROCEDURES'.