

# SAP30L Antibody (Center)

Affinity Purified Rabbit Polyclonal Antibody (Pab)

Catalog # AP18649c

## Product Information

---

Application	WB, E
Primary Accession	<a href="#">Q9HAJ7</a>
Other Accession	<a href="#">Q5SQF8</a> , <a href="#">NP_001124534.1</a>
Reactivity	Human
Predicted	Mouse
Host	Rabbit
Clonality	Polyclonal
Isotype	Rabbit IgG
Clone Names	RB37364
Calculated MW	20877
Antigen Region	106-134

## Additional Information

---

Gene ID	79685
Other Names	Histone deacetylase complex subunit SAP30L, HCV non-structural protein 4A-transactivated protein 2, Sin3 corepressor complex subunit SAP30L, Sin3-associated protein p30-like, SAP30L, NS4ATP2
Target/Specificity	This SAP30L antibody is generated from rabbits immunized with a KLH conjugated synthetic peptide between 106-134 amino acids from the Central region of human SAP30L.
Dilution	WB~~1:1000 E~~Use at an assay dependent concentration.
Format	Purified polyclonal antibody supplied in PBS with 0.09% (W/V) sodium azide. This antibody is purified through a protein A column, followed by peptide affinity purification.
Storage	Maintain refrigerated at 2-8°C for up to 2 weeks. For long term storage store at -20°C in small aliquots to prevent freeze-thaw cycles.
Precautions	SAP30L Antibody (Center) is for research use only and not for use in diagnostic or therapeutic procedures.

## Protein Information

---

Name	SAP30L
Synonyms	NS4ATP2

<b>Function</b>	[Isoform 1]: Functions as a transcription repressor, probably via its interaction with histone deacetylase complexes (PubMed: <a href="#">16820529</a> , PubMed: <a href="#">18070604</a> ). Involved in the functional recruitment of the class 1 Sin3-histone deacetylase complex (HDAC) to the nucleolus (PubMed: <a href="#">16820529</a> ). Binds DNA, apparently without sequence-specificity, and bends bound double-stranded DNA (PubMed: <a href="#">19015240</a> ). Binds phosphoinositol phosphates (phosphoinositol 3- phosphate, phosphoinositol 4-phosphate and phosphoinositol 5-phosphate) via the same basic sequence motif that mediates DNA binding and nuclear import (PubMed: <a href="#">19015240</a> , PubMed: <a href="#">26609676</a> ).
<b>Cellular Location</b>	[Isoform 1]: Nucleus, nucleolus [Isoform 3]: Nucleus, nucleolus
<b>Tissue Location</b>	Detected in brain and ovary, and at lower levels in heart, small intestine, lung, kidney, skeletal muscle, stomach and spleen (at protein level) (PubMed:18070604). Ubiquitous; expressed in all tissues tested with highest levels in testis (PubMed:14680513)

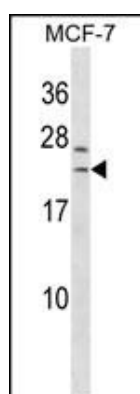
## Background

SAP30L is involved in the functional recruitment of the class 1 Sin3-histone deacetylase complex (HDAC) to the nucleolus.

## References

Silva, L.K., et al. Eur. J. Hum. Genet. (2010) In press :  
Viiri, K.M., et al. Mol. Cell. Biol. 29(2):342-356(2009)  
Korkeamaki, H., et al. FEBS Lett. 582(2):379-384(2008)  
Assmann, E.M., et al. J. Biol. Chem. 281(15):9869-9881(2006)  
Beausoleil, S.A., et al. Proc. Natl. Acad. Sci. U.S.A. 101(33):12130-12135(2004)

## Images



SAP30L Antibody (Center) (Cat. #AP18649c) western blot analysis in MCF-7 cell line lysates (35ug/lane). This demonstrates the SAP30L antibody detected the SAP30L protein (arrow).

Please note: All products are 'FOR RESEARCH USE ONLY. NOT FOR USE IN DIAGNOSTIC OR THERAPEUTIC PROCEDURES'.