

## CCNJ Antibody (Center)

Affinity Purified Rabbit Polyclonal Antibody (Pab)

Catalog # AP18658c

### Product Information

---

Application	WB, E
Primary Accession	<a href="#">Q5T5M9</a>
Other Accession	<a href="#">Q3TZI6</a> , <a href="#">NP_001127847.1</a>
Reactivity	Human
Predicted	Mouse
Host	Rabbit
Clonality	Polyclonal
Isotype	Rabbit IgG
Clone Names	RB37388
Calculated MW	42581
Antigen Region	223-249

### Additional Information

---

Gene ID	54619
Other Names	Cyclin-J, CCNJ
Target/Specificity	This CCNJ antibody is generated from rabbits immunized with a KLH conjugated synthetic peptide between 223-249 amino acids from the Central region of human CCNJ.
Dilution	WB~~1:1000 E~~Use at an assay dependent concentration.
Format	Purified polyclonal antibody supplied in PBS with 0.09% (W/V) sodium azide. This antibody is purified through a protein A column, followed by peptide affinity purification.
Storage	Maintain refrigerated at 2-8°C for up to 2 weeks. For long term storage store at -20°C in small aliquots to prevent freeze-thaw cycles.
Precautions	CCNJ Antibody (Center) is for research use only and not for use in diagnostic or therapeutic procedures.

### Protein Information

---

Name	CCNJ
------	------

### Background

---

The function of this protein is unknown.

## References

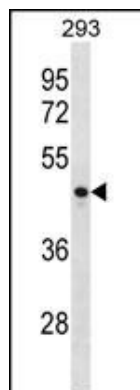
---

Lamesch, P., et al. Genomics 89(3):307-315(2007)

Oh, J.H., et al. Mamm. Genome 16(12):942-954(2005)

## Images

---



CCNJ Antibody (Center) (Cat. #AP18658c) western blot analysis in 293 cell line lysates (35ug/lane). This demonstrates the CCNJ antibody detected the CCNJ protein (arrow).

Please note: All products are 'FOR RESEARCH USE ONLY. NOT FOR USE IN DIAGNOSTIC OR THERAPEUTIC PROCEDURES'.