

## CTRL Antibody (Center)

Affinity Purified Rabbit Polyclonal Antibody (Pab)

Catalog # AP18667c

### Product Information

---

Application	WB, E
Primary Accession	<a href="#">P40313</a>
Other Accession	<a href="#">NP_001898.1</a>
Reactivity	Human
Host	Rabbit
Clonality	Polyclonal
Isotype	Rabbit IgG
Clone Names	RB37412
Calculated MW	28002
Antigen Region	72-98

### Additional Information

---

Gene ID	1506
Other Names	Chymotrypsin-like protease CTRL-1, 3421-, CTRL, CTRL1
Target/Specificity	This CTRL antibody is generated from rabbits immunized with a KLH conjugated synthetic peptide between 72-98 amino acids from the Central region of human CTRL.
Dilution	WB~~1:1000 E~~Use at an assay dependent concentration.
Format	Purified polyclonal antibody supplied in PBS with 0.09% (W/V) sodium azide. This antibody is purified through a protein A column, followed by peptide affinity purification.
Storage	Maintain refrigerated at 2-8°C for up to 2 weeks. For long term storage store at -20°C in small aliquots to prevent freeze-thaw cycles.
Precautions	CTRL Antibody (Center) is for research use only and not for use in diagnostic or therapeutic procedures.

### Protein Information

---

Name	CTRL
Synonyms	CTRL1

### Background

---

The function of this protein remains unknown.

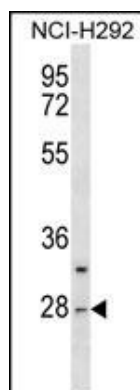
## References

---

Yang, Gu., et al. Reprod Sci 16(9):905-913(2009)  
Gu, Y., et al. Reprod Sci 16(5):479-488(2009)  
Lamesch, P., et al. Genomics 89(3):307-315(2007)  
Reseland, J.E., et al. J. Biol. Chem. 272(12):8099-8104(1997)  
Larsen, F., et al. Hum. Mol. Genet. 2(10):1589-1595(1993)

## Images

---



CTRL Antibody (Center) (Cat. #AP18667c) western blot analysis in NCI-H292 cell line lysates (35ug/lane). This demonstrates the CTRL antibody detected the CTRL protein (arrow).

Please note: All products are 'FOR RESEARCH USE ONLY. NOT FOR USE IN DIAGNOSTIC OR THERAPEUTIC PROCEDURES'.