

KIRREL2 Antibody (N-term)

Affinity Purified Rabbit Polyclonal Antibody (Pab)

Catalog # AP18668a

Product Information

Application	WB, E
Primary Accession	Q6UWL6
Other Accession	Q7TSU7 , NP_115499.4
Reactivity	Human
Predicted	Mouse
Host	Rabbit
Clonality	Polyclonal
Isotype	Rabbit IgG
Clone Names	RB37417
Calculated MW	75093
Antigen Region	190-216

Additional Information

Gene ID	84063
Other Names	Kin of IRRE-like protein 2, Kin of irregular chiasm-like protein 2, Nephrin-like protein 3, KIRREL2, NEPH3
Target/Specificity	This KIRREL2 antibody is generated from rabbits immunized with a KLH conjugated synthetic peptide between 190-216 amino acids from the N-terminal region of human KIRREL2.
Dilution	WB~~1:1000 E~~Use at an assay dependent concentration.
Format	Purified polyclonal antibody supplied in PBS with 0.09% (W/V) sodium azide. This antibody is purified through a protein A column, followed by peptide affinity purification.
Storage	Maintain refrigerated at 2-8°C for up to 2 weeks. For long term storage store at -20°C in small aliquots to prevent freeze-thaw cycles.
Precautions	KIRREL2 Antibody (N-term) is for research use only and not for use in diagnostic or therapeutic procedures.

Protein Information

Name	KIRREL2
Synonyms	NEPH3

Function	May regulate basal insulin secretion.
Cellular Location	Cell membrane {ECO:0000250 UniProtKB:Q7TSU7}; Single-pass type I membrane protein. Note=Localized along the sites of the cell contacts. Colocalizes with E-Cadherin and beta- catenin. {ECO:0000250 UniProtKB:Q7TSU7}
Tissue Location	Highly expressed in beta-cells of the pancreatic islets.

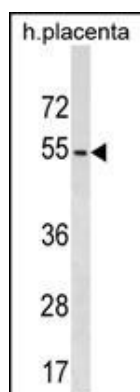
Background

KIRREL2 is an immunoglobulin super family gene, it has been found to be expressed in beta cells of pancreatic islets.

References

Bailey, S.D., et al. Diabetes Care 33(10):2250-2253(2010)
 Davila, S., et al. Genes Immun. 11(3):232-238(2010)
 Talmud, P.J., et al. Am. J. Hum. Genet. 85(5):628-642(2009)
 Ristola, M., et al. BMC Mol. Biol. 10, 83 (2009) :
 Rinta-Valkama, J., et al. Diabetes Metab. Res. Rev. 23(2):119-126(2007)

Images



KIRREL2 Antibody (N-term) (Cat. #AP18668a) western blot analysis in human placenta tissue lysates (35ug/lane). This demonstrates the KIRREL2 antibody detected the KIRREL2 protein (arrow).

Please note: All products are 'FOR RESEARCH USE ONLY. NOT FOR USE IN DIAGNOSTIC OR THERAPEUTIC PROCEDURES'.