

Mouse Actl7b Antibody (Center)

Affinity Purified Rabbit Polyclonal Antibody (Pab)

Catalog # AP18685c

Product Information

Application	WB, E
Primary Accession	Q9QY83
Other Accession	Q4QR76 , NP_079547.2
Reactivity	Mouse
Predicted	Rat
Host	Rabbit
Clonality	Polyclonal
Isotype	Rabbit IgG
Clone Names	RB38635
Calculated MW	45565
Antigen Region	227-253

Additional Information

Gene ID	11471
Other Names	Actin-like protein 7B, Actin-like-7-beta, Testis-specific actin-1, T-actin-1, Actl7b, Tact1
Target/Specificity	This Mouse Actl7b antibody is generated from rabbits immunized with a KLH conjugated synthetic peptide between 227-253 amino acids from the Central region of mouse Actl7b.
Dilution	WB~~1:1000 E~~Use at an assay dependent concentration.
Format	Purified polyclonal antibody supplied in PBS with 0.09% (W/V) sodium azide. This antibody is purified through a protein A column, followed by peptide affinity purification.
Storage	Maintain refrigerated at 2-8°C for up to 2 weeks. For long term storage store at -20°C in small aliquots to prevent freeze-thaw cycles.
Precautions	Mouse Actl7b Antibody (Center) is for research use only and not for use in diagnostic or therapeutic procedures.

Protein Information

Name	Actl7b
Synonyms	Tact1

Cellular Location	Cytoplasm, cytoskeleton.
Tissue Location	Testis specific.

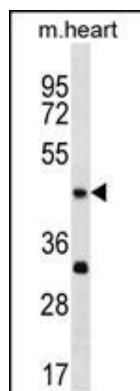
Background

The function of this protein remains unknown.

References

Tanaka, H., et al. Biol. Reprod. 69(2):475-482(2003)
Hisano, M., et al. Mol. Reprod. Dev. 65(2):148-156(2003)
Cuajungco, M.P., et al. DNA Cell Biol. 20(9):579-586(2001)
Chadwick, B.P., et al. Genomics 58(3):302-309(1999)

Images



Mouse Actl7b Antibody (Center) (Cat. #AP18685c) western blot analysis in mouse heart tissue lysates (35ug/lane). This demonstrates the Actl7b antibody detected the Actl7b protein (arrow).

Please note: All products are 'FOR RESEARCH USE ONLY. NOT FOR USE IN DIAGNOSTIC OR THERAPEUTIC PROCEDURES'.