

# HECTD2 Antibody (N-term)

Affinity Purified Rabbit Polyclonal Antibody (Pab)

Catalog # AP18720a

## Product Information

---

Application	WB, E
Primary Accession	<a href="#">Q5U5R9</a>
Other Accession	<a href="#">NP_877497.2</a>
Reactivity	Human
Host	Rabbit
Clonality	Polyclonal
Isotype	Rabbit IgG
Clone Names	RB30491
Calculated MW	88122
Antigen Region	203-232

## Additional Information

---

Gene ID	143279
Other Names	Probable E3 ubiquitin-protein ligase HECTD2, 632-, HECT domain-containing protein 2, HECTD2
Target/Specificity	This HECTD2 antibody is generated from rabbits immunized with a KLH conjugated synthetic peptide between 203-232 amino acids from the N-terminal region of human HECTD2.
Dilution	WB~~1:1000 E~~Use at an assay dependent concentration.
Format	Purified polyclonal antibody supplied in PBS with 0.09% (W/V) sodium azide. This antibody is purified through a protein A column, followed by peptide affinity purification.
Storage	Maintain refrigerated at 2-8°C for up to 2 weeks. For long term storage store at -20°C in small aliquots to prevent freeze-thaw cycles.
Precautions	HECTD2 Antibody (N-term) is for research use only and not for use in diagnostic or therapeutic procedures.

## Protein Information

---

Name	HECTD2 {ECO:0000303 PubMed:28584101, ECO:0000312 HGNC:HGNC:26736}
Function	E3 ubiquitin-protein ligase which accepts ubiquitin from an E2 ubiquitin-conjugating enzyme in the form of a thioester and then directly

transfers the ubiquitin to targeted substrates.

## Background

---

Probable E3 ubiquitin-protein ligase which accepts ubiquitin from an E2 ubiquitin-conjugating enzyme in the form of a thioester and then directly transfers the ubiquitin to targeted substrates (By similarity).

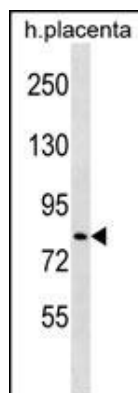
## References

---

Lloyd, S.E., et al. PLoS Genet. 5 (2), E1000383 (2009) :  
Lloyd, S.E., et al. BMC Med. Genet. 10, 90 (2009) :  
Grupe, A., et al. Am. J. Hum. Genet. 78(1):78-88(2006)  
Deloukas, P., et al. Nature 429(6990):375-381(2004)

## Images

---



HECTD2 Antibody (N-term)(Cat. #AP18720a) western blot analysis in human placenta tissue lysates (35ug/lane). This demonstrates the HECTD2 antibody detected the HECTD2 protein (arrow).

Please note: All products are 'FOR RESEARCH USE ONLY. NOT FOR USE IN DIAGNOSTIC OR THERAPEUTIC PROCEDURES'.