

GMCL1L Antibody (C-term)

Affinity Purified Rabbit Polyclonal Antibody (Pab)

Catalog # AP18726b

Product Information

| | |
|--------------------------|------------------------|
| Application | WB, E |
| Primary Accession | Q8NEA9 |
| Reactivity | Human |
| Host | Rabbit |
| Clonality | Polyclonal |
| Isotype | Rabbit IgG |
| Clone Names | RB30505 |
| Calculated MW | 60299 |
| Antigen Region | 498-524 |

Additional Information

| | |
|---------------------------|--|
| Gene ID | 64396 |
| Other Names | Putative germ cell-less protein-like 1-like, GMCL1P1, GCL, GMCL1L |
| Target/Specificity | This GMCL1L antibody is generated from rabbits immunized with a KLH conjugated synthetic peptide between 498-524 amino acids from the C-terminal region of human GMCL1L. |
| Dilution | WB~~1:1000 E~~Use at an assay dependent concentration. |
| Format | Purified polyclonal antibody supplied in PBS with 0.09% (W/V) sodium azide. This antibody is purified through a protein A column, followed by peptide affinity purification. |
| Storage | Maintain refrigerated at 2-8°C for up to 2 weeks. For long term storage store at -20°C in small aliquots to prevent freeze-thaw cycles. |
| Precautions | GMCL1L Antibody (C-term) is for research use only and not for use in diagnostic or therapeutic procedures. |

Protein Information

| | |
|-----------------|--|
| Name | GMCL2 (HGNC:19717) |
| Synonyms | GCL, GMCL1L, GMCL1P1 |
| Function | Possible function in spermatogenesis. Probable substrate- specific adapter of an E3 ubiquitin-protein ligase complex which mediates the ubiquitination and subsequent proteasomal degradation of target proteins |

(PubMed:[14528312](#)).

Cellular Location

Nucleus matrix {ECO:0000250 | UniProtKB:Q920G9}.

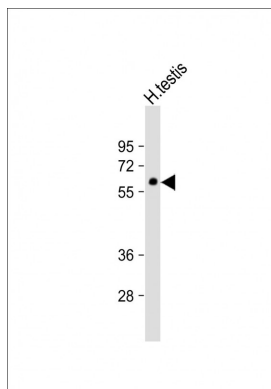
Tissue Location

Expressed predominantly in testis.

Background

GMCL1L is possible function in spermatogenesis. Enhances the degradation of MDM2 and increases the amount of p53 probably by modulating the nucleocytoplasmic transport (By similarity). Probable substrate-specific adapter of an E3 ubiquitin-protein ligase complex which mediates the ubiquitination and subsequent proteasomal degradation of target proteins.

Images



Anti-GMCL1L Antibody (C-term) at 1:1000 dilution + human testis lysate Lysates/proteins at 20 µg per lane. Secondary Goat Anti-Rabbit IgG, (H+L), Peroxidase conjugated at 1/10000 dilution. Predicted band size : 60 kDa Blocking/Dilution buffer: 5% NFDM/TBST.

Please note: All products are 'FOR RESEARCH USE ONLY. NOT FOR USE IN DIAGNOSTIC OR THERAPEUTIC PROCEDURES'.