

GRAMD3 Antibody (N-term)

Affinity Purified Rabbit Polyclonal Antibody (Pab)

Catalog # AP18727a

Product Information

Application	WB, E
Primary Accession	Q96HH9
Other Accession	NP_076416.2
Reactivity	Human
Host	Rabbit
Clonality	Polyclonal
Isotype	Rabbit IgG
Clone Names	RB33318
Calculated MW	47869
Antigen Region	15-43

Additional Information

Gene ID	65983
Other Names	GRAM domain-containing protein 3, HCV NS3-transactivated protein 2, GRAMD3, NS3TP2
Target/Specificity	This GRAMD3 antibody is generated from rabbits immunized with a KLH conjugated synthetic peptide between 15-43 amino acids from the N-terminal region of human GRAMD3.
Dilution	WB~~1:1000 E~~Use at an assay dependent concentration.
Format	Purified polyclonal antibody supplied in PBS with 0.09% (W/V) sodium azide. This antibody is purified through a protein A column, followed by peptide affinity purification.
Storage	Maintain refrigerated at 2-8°C for up to 2 weeks. For long term storage store at -20°C in small aliquots to prevent freeze-thaw cycles.
Precautions	GRAMD3 Antibody (N-term) is for research use only and not for use in diagnostic or therapeutic procedures.

Protein Information

Name	GRAMD2B
Synonyms	GRAMD3, NS3TP2

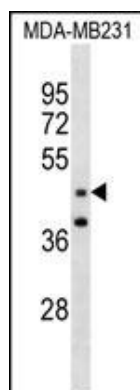
Background

The function of this protein remains unknown.

References

Rose, J.E., et al. Mol. Med. 16 (7-8), 247-253 (2010) :
Lamesch, P., et al. Genomics 89(3):307-315(2007)
Benjamin, E.J., et al. BMC Med. Genet. 8 SUPPL 1, S11 (2007) :

Images



GRAMD3 Antibody (N-term)(Cat. #AP18727a) western blot analysis in MDA-MB231 cell line lysates (35ug/lane). This demonstrates the GRAMD3 antibody detected the GRAMD3 protein (arrow).

Please note: All products are 'FOR RESEARCH USE ONLY. NOT FOR USE IN DIAGNOSTIC OR THERAPEUTIC PROCEDURES'.