

KLHL4 Antibody (N-term)

Affinity Purified Rabbit Polyclonal Antibody (Pab)

Catalog # AP18735a

Product Information

Application	WB, E
Primary Accession	Q9C0H6
Other Accession	NP_061990.2
Reactivity	Human
Host	Rabbit
Clonality	Polyclonal
Isotype	Rabbit IgG
Clone Names	RB37334
Calculated MW	80245
Antigen Region	84-113

Additional Information

Gene ID	56062
Other Names	Kelch-like protein 4, KLHL4, KIAA1687
Target/Specificity	This KLHL4 antibody is generated from rabbits immunized with a KLH conjugated synthetic peptide between 84-113 amino acids from the N-terminal region of human KLHL4.
Dilution	WB~~1:1000 E~~Use at an assay dependent concentration.
Format	Purified polyclonal antibody supplied in PBS with 0.09% (W/V) sodium azide. This antibody is purified through a protein A column, followed by peptide affinity purification.
Storage	Maintain refrigerated at 2-8°C for up to 2 weeks. For long term storage store at -20°C in small aliquots to prevent freeze-thaw cycles.
Precautions	KLHL4 Antibody (N-term) is for research use only and not for use in diagnostic or therapeutic procedures.

Protein Information

Name	KLHL4
Synonyms	KIAA1687
Cellular Location	Cytoplasm, cytoskeleton.

Tissue Location

Expressed in adult fibroblasts and in a range of fetal tissues including tongue, palate, and mandible

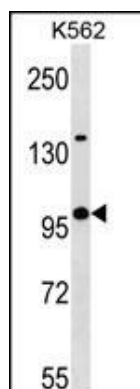
Background

This gene encodes a member of the kelch family of proteins, which are characterized by kelch repeat motifs and a POZ/BTB protein-binding domain. It is thought that kelch repeats are actin binding domains. However, the specific function of this protein has not been determined. Alternative splicing of this gene results in two transcript variants encoding different isoforms.

References

Styrkarsdottir, U., et al. Nat. Genet. 41(1):15-17(2009)
Cheroki, C., et al. J. Med. Genet. 45(4):228-232(2008)
Ross, M.T., et al. Nature 434(7031):325-337(2005)
Braybrook, C., et al. Hum. Genet. 108(6):537-545(2001)
Braybrook, C., et al. Genomics 72(2):128-136(2001)

Images



KLHL4 Antibody (N-term)(Cat. #AP18735a) western blot analysis in K562 cell line lysates (35ug/lane). This demonstrates the KLHL4 antibody detected the KLHL4 protein (arrow).

Please note: All products are 'FOR RESEARCH USE ONLY. NOT FOR USE IN DIAGNOSTIC OR THERAPEUTIC PROCEDURES'.