

HKR1 Antibody (N-term)

Affinity Purified Rabbit Polyclonal Antibody (Pab)

Catalog # AP18743a

Product Information

Application	WB, E
Primary Accession	P10072
Other Accession	NP_861451.1
Reactivity	Human
Host	Rabbit
Clonality	Polyclonal
Isotype	Rabbit IgG
Clone Names	RB37413
Calculated MW	75128
Antigen Region	133-159

Additional Information

Gene ID	284459
Other Names	Krueppel-related zinc finger protein 1, Protein HKR1, Zinc finger protein 875, HKR1, ZNF875
Target/Specificity	This HKR1 antibody is generated from rabbits immunized with a KLH conjugated synthetic peptide between 133-159 amino acids from the N-terminal region of human HKR1.
Dilution	WB~~1:1000 E~~Use at an assay dependent concentration.
Format	Purified polyclonal antibody supplied in PBS with 0.09% (W/V) sodium azide. This antibody is purified through a protein A column, followed by peptide affinity purification.
Storage	Maintain refrigerated at 2-8°C for up to 2 weeks. For long term storage store at -20°C in small aliquots to prevent freeze-thaw cycles.
Precautions	HKR1 Antibody (N-term) is for research use only and not for use in diagnostic or therapeutic procedures.

Protein Information

Name	ZNF875 (HGNC:4928)
Function	May be involved in transcriptional regulation.
Cellular Location	Nucleus.

Background

HKR1 may be involved in transcriptional regulation.

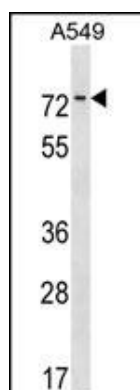
References

Oguri, T., et al. Gene 222(1):61-67(1998)

Matsumoto, N., et al. Genomics 36(1):220-221(1996)

Ruppert, J.M., et al. Mol. Cell. Biol. 8(8):3104-3113(1988)

Images



HKR1 Antibody (N-term)(Cat. #AP18743a) western blot analysis in A549 cell line lysates (35ug/lane). This demonstrates the HKR1 antibody detected the HKR1 protein (arrow).

Please note: All products are 'FOR RESEARCH USE ONLY. NOT FOR USE IN DIAGNOSTIC OR THERAPEUTIC PROCEDURES'.