

SUGT1 Antibody (C-term)

Affinity Purified Rabbit Polyclonal Antibody (Pab)

Catalog # AP18749b

Product Information

Application	WB, E
Primary Accession	Q9Y2Z0
Other Accession	B0BN85 , Q9CX34 , Q2KIK0 , NP_001124384.1
Reactivity	Human
Predicted	Bovine, Mouse, Rat
Host	Rabbit
Clonality	Polyclonal
Isotype	Rabbit IgG
Clone Names	RB38623
Calculated MW	41024
Antigen Region	330-356

Additional Information

Gene ID	10910
Other Names	Suppressor of G2 allele of SKP1 homolog, Protein 40-6-3, Sgt1, SUGT1
Target/Specificity	This SUGT1 antibody is generated from rabbits immunized with a KLH conjugated synthetic peptide between 330-356 amino acids from the C-terminal region of human SUGT1.
Dilution	WB~~1:1000 E~~Use at an assay dependent concentration.
Format	Purified polyclonal antibody supplied in PBS with 0.09% (W/V) sodium azide. This antibody is purified through a protein A column, followed by peptide affinity purification.
Storage	Maintain refrigerated at 2-8°C for up to 2 weeks. For long term storage store at -20°C in small aliquots to prevent freeze-thaw cycles.
Precautions	SUGT1 Antibody (C-term) is for research use only and not for use in diagnostic or therapeutic procedures.

Protein Information

Name	SUGT1 (HGNC:16987)
Function	May play a role in ubiquitination and subsequent proteasomal degradation of target proteins.

Cellular Location

Cytoplasm. Nucleus. Note=Translocates to the nucleus upon heat shock, requiring S100A6

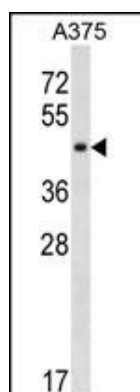
Background

This gene is homologous to the yeast gene SGT1, which encodes a protein involved in kinetochore function and required for the G1/S and G2/M transitions. Complementation studies suggest that the human protein has similar functions. Two transcript variants encoding different isoforms have been found for this gene.

References

Davies, A.E., et al. J. Cell Biol. 189(2):261-274(2010)
Iwatsuki, M., et al. Int. J. Oncol. 36(3):569-575(2010)
Bansal, P.K., et al. J. Biol. Chem. 284(28):18692-18698(2009)
Zabka, M., et al. Biochem. Biophys. Res. Commun. 370(1):179-183(2008)
Spiechowicz, M., et al. Biochem. Biophys. Res. Commun. 357(4):1148-1153(2007)

Images



SUGT1 Antibody (C-term)(Cat. #AP18749b) western blot analysis in A375 cell line lysates (35ug/lane). This demonstrates the SUGT1 antibody detected the SUGT1 protein (arrow).

Please note: All products are 'FOR RESEARCH USE ONLY. NOT FOR USE IN DIAGNOSTIC OR THERAPEUTIC PROCEDURES'.