

# TPD52L1 Antibody (N-term)

Affinity Purified Rabbit Polyclonal Antibody (Pab)

Catalog # AP18751a

## Product Information

---

<b>Application</b>	WB, E
<b>Primary Accession</b>	<a href="#">Q16890</a>
<b>Other Accession</b>	<a href="#">O54818</a> , <a href="#">NP_001003395.1</a>
<b>Reactivity</b>	Human, Mouse
<b>Host</b>	Rabbit
<b>Clonality</b>	Polyclonal
<b>Isotype</b>	Rabbit IgG
<b>Clone Names</b>	RB38630
<b>Calculated MW</b>	22449
<b>Antigen Region</b>	43-70

## Additional Information

---

<b>Gene ID</b>	7164
<b>Other Names</b>	Tumor protein D53, hD53, Tumor protein D52-like 1, TPD52L1
<b>Target/Specificity</b>	This TPD52L1 antibody is generated from rabbits immunized with a KLH conjugated synthetic peptide between 43-70 amino acids from the N-terminal region of human TPD52L1.
<b>Dilution</b>	WB~~1:1000 E~~Use at an assay dependent concentration.
<b>Format</b>	Purified polyclonal antibody supplied in PBS with 0.09% (W/V) sodium azide. This antibody is purified through a protein A column, followed by peptide affinity purification.
<b>Storage</b>	Maintain refrigerated at 2-8°C for up to 2 weeks. For long term storage store at -20°C in small aliquots to prevent freeze-thaw cycles.
<b>Precautions</b>	TPD52L1 Antibody (N-term) is for research use only and not for use in diagnostic or therapeutic procedures.

## Protein Information

---

<b>Name</b>	TPD52L1
-------------	---------

## Background

---

This gene encodes a member of the tumor protein D52 (TPD52) family. The encoded protein contains a

coiled-coil domain and may form homo- or hetero-dimer with TPD52 family members. The protein is reported to be involved in cell proliferation and calcium signaling. It also interacts with the mitogen-activated protein kinase kinase kinase 5 (MAP3K5/ASK1) and positively regulates MAP3K5-induced apoptosis. Multiple alternatively spliced transcript variants have been observed, but the full-length nature of some variants has not yet been determined.

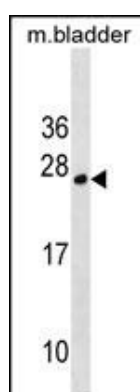
## References

---

Barbaric, D., et al. Leuk. Res. 30(11):1355-1363(2006)  
Cao, Q., et al. Biochem. Biophys. Res. Commun. 344(3):798-806(2006)  
Boutros, R., et al. Exp. Cell Res. 310(1):152-165(2005)  
Cho, S., et al. J. Biol. Chem. 279(16):16050-16056(2004)  
Boutros, R., et al. J. Mol. Biol. 332(3):675-687(2003)

## Images

---



TPD52L1 Antibody (N-term)(Cat. #AP18751a) western blot analysis in mouse bladder tissue lysates (35ug/lane). This demonstrates the TPD52L1 antibody detected the TPD52L1 protein (arrow).

Please note: All products are 'FOR RESEARCH USE ONLY. NOT FOR USE IN DIAGNOSTIC OR THERAPEUTIC PROCEDURES'.