

ARMCX4 Antibody (Center)

Affinity Purified Rabbit Polyclonal Antibody (Pab)

Catalog # AP18766c

Product Information

Application	WB, E
Primary Accession	Q5H9R4
Reactivity	Human
Host	Rabbit
Clonality	Polyclonal
Isotype	Rabbit IgG
Clone Names	RB38692
Calculated MW	235964
Antigen Region	114-140

Additional Information

Gene ID	100131755
Other Names	Armadillo repeat-containing X-linked protein 4, ARMCX4
Target/Specificity	This ARMCX4 antibody is generated from rabbits immunized with a KLH conjugated synthetic peptide between 114-140 amino acids from the Central region of human ARMCX4.
Dilution	WB~~1:1000 E~~Use at an assay dependent concentration.
Format	Purified polyclonal antibody supplied in PBS with 0.09% (W/V) sodium azide. This antibody is purified through a protein A column, followed by peptide affinity purification.
Storage	Maintain refrigerated at 2-8°C for up to 2 weeks. For long term storage store at -20°C in small aliquots to prevent freeze-thaw cycles.
Precautions	ARMCX4 Antibody (Center) is for research use only and not for use in diagnostic or therapeutic procedures.

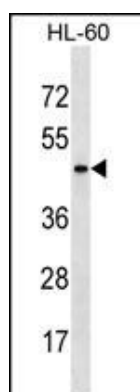
Protein Information

Name	ARMCX4
Cellular Location	Membrane; Single-pass membrane protein

Background

The function of this protein remains unknown.

Images



ARMCX4 Antibody (Center)(Cat. #AP18766c) western blot analysis in HL-60 cell line lysates (35ug/lane). This demonstrates the ARMCX4 antibody detected the ARMCX4 protein (arrow).

Please note: All products are 'FOR RESEARCH USE ONLY. NOT FOR USE IN DIAGNOSTIC OR THERAPEUTIC PROCEDURES'.