

CEP170L Antibody (Center)

Affinity Purified Rabbit Polyclonal Antibody (Pab)

Catalog # AP18772c

Product Information

Application	WB, E
Primary Accession	Q96L14
Other Accession	Q5SW79
Reactivity	Human
Host	Rabbit
Clonality	Polyclonal
Isotype	Rabbit IgG
Clone Names	RB38727
Calculated MW	32648
Antigen Region	140-167

Additional Information

Other Names	Cep170-like protein, CEP170 pseudogene 1, CEP170P1, CEP170L, KIAA0470L
Target/Specificity	This CEP170L antibody is generated from rabbits immunized with a KLH conjugated synthetic peptide between 140-167 amino acids from the Central region of human CEP170L.
Dilution	WB~~1:1000 E~~Use at an assay dependent concentration.
Format	Purified polyclonal antibody supplied in PBS with 0.09% (W/V) sodium azide. This antibody is purified through a protein A column, followed by peptide affinity purification.
Storage	Maintain refrigerated at 2-8°C for up to 2 weeks. For long term storage store at -20°C in small aliquots to prevent freeze-thaw cycles.
Precautions	CEP170L Antibody (Center) is for research use only and not for use in diagnostic or therapeutic procedures.

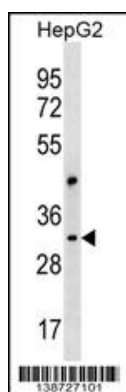
Protein Information

Name	CEP170P1
Synonyms	CEP170L, KIAA0470L

Background

The function of this protein remains unknown.

Images



CEP170L Antibody (Center)(Cat. #AP18772c) western blot analysis in HepG2 cell line lysates (35ug/lane). This demonstrates the CEP170L antibody detected the CEP170L protein (arrow).

Please note: All products are 'FOR RESEARCH USE ONLY. NOT FOR USE IN DIAGNOSTIC OR THERAPEUTIC PROCEDURES'.