

LRRC14B Antibody (N-term)

Affinity Purified Rabbit Polyclonal Antibody (Pab)

Catalog # AP18791a

Product Information

Application	WB, E
Primary Accession	A6NHZ5
Reactivity	Human
Host	Rabbit
Clonality	Polyclonal
Isotype	Rabbit IgG
Clone Names	RB38879
Calculated MW	56758
Antigen Region	55-81

Additional Information

Gene ID	389257
Other Names	Leucine-rich repeat-containing protein 14B, LRRC14B
Target/Specificity	This LRRC14B antibody is generated from rabbits immunized with a KLH conjugated synthetic peptide between 55-81 amino acids from the N-terminal region of human LRRC14B.
Dilution	WB~~1:1000 E~~Use at an assay dependent concentration.
Format	Purified polyclonal antibody supplied in PBS with 0.09% (W/V) sodium azide. This antibody is purified through a protein A column, followed by peptide affinity purification.
Storage	Maintain refrigerated at 2-8°C for up to 2 weeks. For long term storage store at -20°C in small aliquots to prevent freeze-thaw cycles.
Precautions	LRRC14B Antibody (N-term) is for research use only and not for use in diagnostic or therapeutic procedures.

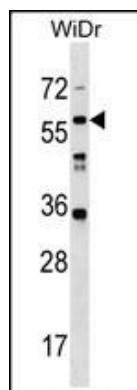
Protein Information

Name	LRRC14B (HGNC:37268)
------	--

Background

The function of this protein remains unknown.

Images



LRRC14B Antibody (N-term)(Cat. #AP18791a) western blot analysis in WiDr cell line lysates (35ug/lane). This demonstrates the LRRC14B antibody detected the LRRC14B protein (arrow).

Please note: All products are 'FOR RESEARCH USE ONLY. NOT FOR USE IN DIAGNOSTIC OR THERAPEUTIC PROCEDURES'.