

LRRTM2 Antibody (C-term)

Affinity Purified Rabbit Polyclonal Antibody (Pab)

Catalog # AP18792b

Product Information

Application	WB, E
Primary Accession	O43300
Other Accession	Q8BGA3 , NP_056379.1
Reactivity	Human
Predicted	Mouse
Host	Rabbit
Clonality	Polyclonal
Isotype	Rabbit IgG
Clone Names	RB38886
Calculated MW	59076
Antigen Region	465-491

Additional Information

Gene ID	26045
Other Names	Leucine-rich repeat transmembrane neuronal protein 2, Leucine-rich repeat neuronal 2 protein, LRRTM2, KIAA0416, LRRN2
Target/Specificity	This LRRTM2 antibody is generated from rabbits immunized with a KLH conjugated synthetic peptide between 465-491 amino acids from the C-terminal region of human LRRTM2.
Dilution	WB~~1:1000 E~~Use at an assay dependent concentration.
Format	Purified polyclonal antibody supplied in PBS with 0.09% (W/V) sodium azide. This antibody is purified through a protein A column, followed by peptide affinity purification.
Storage	Maintain refrigerated at 2-8°C for up to 2 weeks. For long term storage store at -20°C in small aliquots to prevent freeze-thaw cycles.
Precautions	LRRTM2 Antibody (C-term) is for research use only and not for use in diagnostic or therapeutic procedures.

Protein Information

Name	LRRTM2
Synonyms	KIAA0416, LRRN2

Function	Involved in the development and maintenance of excitatory synapses in the vertebrate nervous system. Regulates surface expression of AMPA receptors and instructs the development of functional glutamate release sites. Acts as a ligand for the presynaptic receptors NRXN1-A and NRXN1-B (By similarity).
Cellular Location	Cell membrane; Single-pass type I membrane protein. Postsynaptic cell membrane; Single-pass type I membrane protein. Note=Localized to excitatory synapses
Tissue Location	Expressed in neuronal tissues.

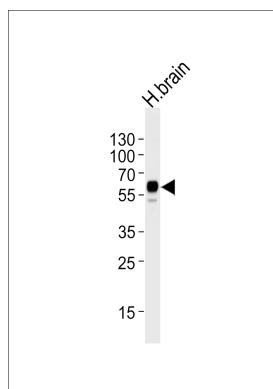
Background

LRRTM2 may play a role in the development and maintenance of the vertebrate nervous system.

References

Graubert, T.A., et al. PLoS ONE 4 (2), E4583 (2009) :
Lauren, J., et al. Genomics 81(4):411-421(2003)

Images



Western blot analysis of lysate from human brain tissue lysate, using LRRTM2 Antibody (C-term)(Cat. #AP18792b). AP18792b was diluted at 1:1000 at each lane. A goat anti-rabbit IgG H&L(HRP) at 1:5000 dilution was used as the secondary antibody. Lysate at 35ug per lane.

Please note: All products are 'FOR RESEARCH USE ONLY. NOT FOR USE IN DIAGNOSTIC OR THERAPEUTIC PROCEDURES'.