

ZPLD1 Antibody (Center)

Affinity Purified Rabbit Polyclonal Antibody (Pab)

Catalog # AP18800C

Product Information

Application	WB, E
Primary Accession	Q8TCW7
Other Accession	Q8BGZ8 , Q95JJ6 , NP_778226.1
Reactivity	Human
Predicted	Monkey, Mouse
Host	Rabbit
Clonality	Polyclonal
Isotype	Rabbit IgG
Clone Names	RB39315
Calculated MW	45530
Antigen Region	256-285

Additional Information

Gene ID	131368
Other Names	Zona pellucida-like domain-containing protein 1, ZP domain-containing protein 1, ZPLD1
Target/Specificity	This ZPLD1 antibody is generated from rabbits immunized with a KLH conjugated synthetic peptide between 256-285 amino acids from the Central region of human ZPLD1.
Dilution	WB~~1:1000 E~~Use at an assay dependent concentration.
Format	Purified polyclonal antibody supplied in PBS with 0.09% (W/V) sodium azide. This antibody is purified through a protein A column, followed by peptide affinity purification.
Storage	Maintain refrigerated at 2-8°C for up to 2 weeks. For long term storage store at -20°C in small aliquots to prevent freeze-thaw cycles.
Precautions	ZPLD1 Antibody (Center) is for research use only and not for use in diagnostic or therapeutic procedures.

Protein Information

Name	ZPLD1
Function	Glycoprotein which is a component of the gelatinous extracellular matrix in the cupulae of the vestibular organ.

Cellular Location	[Zona pellucida-like domain-containing protein 1]: Cytoplasmic vesicle membrane {ECO:0000250 UniProtKB:C0H9B6}; Single-pass type I membrane protein
Tissue Location	Detected in placenta, kidney, lung, pancreas and at very low level in other tissues.

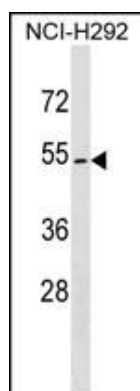
Background

The exact function of ZPLD1 remains unknown.

References

Davila, S., et al. Genes Immun. 11(3):232-238(2010)
 Gianfrancesco, F., et al. Neuroscience 155(2):345-349(2008)
 Kiel, D.P., et al. BMC Med. Genet. 8 SUPPL 1, S14 (2007) :

Images



ZPLD1 Antibody (Center)(Cat. #AP18800c) western blot analysis in NCI-H292 cell line lysates (35ug/lane). This demonstrates the ZPLD1 antibody detected the ZPLD1 protein (arrow).

Citations

- [Spontaneous mutations of the Zpld1 gene in mice cause semicircular canal dysfunction but do not impair gravity receptor or hearing functions.](#)

Please note: All products are 'FOR RESEARCH USE ONLY. NOT FOR USE IN DIAGNOSTIC OR THERAPEUTIC PROCEDURES'.