

GINS2 Antibody (Center)

Affinity Purified Rabbit Polyclonal Antibody (Pab)

Catalog # AP18810c

Product Information

Application	WB, E
Primary Accession	Q9Y248
Other Accession	Q7ZT46 , NP_057179.1
Reactivity	Human
Predicted	Xenopus
Host	Rabbit
Clonality	Polyclonal
Isotype	Rabbit IgG
Clone Names	RB39352
Calculated MW	21428
Antigen Region	90-119

Additional Information

Gene ID	51659
Other Names	DNA replication complex GINS protein PSF2, GINS complex subunit 2, GINS2, PSF2
Target/Specificity	This GINS2 antibody is generated from rabbits immunized with a KLH conjugated synthetic peptide between 90-119 amino acids from the Central region of human GINS2.
Dilution	WB~~1:1000 E~~Use at an assay dependent concentration.
Format	Purified polyclonal antibody supplied in PBS with 0.09% (W/V) sodium azide. This antibody is purified through a protein A column, followed by peptide affinity purification.
Storage	Maintain refrigerated at 2-8°C for up to 2 weeks. For long term storage store at -20°C in small aliquots to prevent freeze-thaw cycles.
Precautions	GINS2 Antibody (Center) is for research use only and not for use in diagnostic or therapeutic procedures.

Protein Information

Name	GINS2 (HGNC:24575)
Synonyms	PSF2

Function Required for correct functioning of the GINS complex, a complex that plays an essential role in the initiation of DNA replication, and progression of DNA replication forks (PubMed:[17417653](#)). GINS complex is a core component of CDC45-MCM-GINS (CMG) helicase, the molecular machine that unwinds template DNA during replication, and around which the replisome is built (PubMed:[32453425](#), PubMed:[34694004](#), PubMed:[34700328](#), PubMed:[35585232](#)).

Cellular Location Nucleus. Chromosome. Note=Associates with chromatin

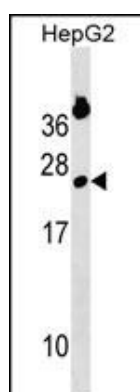
Background

The yeast heterotetrameric GINS complex is made up of Sld5 (GINS4; MIM 610611), Psf1 (GINS1; MIM 610608), Psf2, and Psf3 (GINS3; MIM 610610). The formation of this complex is essential for the initiation of DNA replication in yeast and *Xenopus* egg extracts (Ueno et al., 2005 [PubMed 16287864]). See GINS1 for additional information about the GINS complex.

References

Matsuoka, S., et al. Science 316(5828):1160-1166(2007)
Matsuoka, S., et al. Science 316(5828):1160-1166(2007)
Lamesch, P., et al. Genomics 89(3):307-315(2007)
Takayama, Y., et al. Genes Dev. 17(9):1153-1165(2003)

Images



GINS2 Antibody (Center)(Cat. #AP18810c) western blot analysis in HepG2 cell line lysates (35ug/lane). This demonstrates the GINS2 antibody detected the GINS2 protein (arrow).

Please note: All products are 'FOR RESEARCH USE ONLY. NOT FOR USE IN DIAGNOSTIC OR THERAPEUTIC PROCEDURES'.