

SCRIB Antibody (N-term)

Affinity Purified Rabbit Polyclonal Antibody (Pab)
Catalog # AP18837a

Product Information

Application	WB, E
Primary Accession	Q14160
Other Accession	NP_874365.2
Reactivity	Human, Rat, Mouse
Host	Rabbit
Clonality	Polyclonal
Isotype	Rabbit IgG
Clone Names	RB39490
Antigen Region	382-410

Additional Information

Other Names	Protein scribble homolog, Scribble, hScrib, Protein LAP4, SCRIB, CRIB1, KIAA0147, LAP4, SCRIB1, VARTUL
Target/Specificity	This SCRIB antibody is generated from rabbits immunized with a KLH conjugated synthetic peptide between 382-410 amino acids from the N-terminal region of human SCRIB.
Dilution	WB~~1:1000 E~~Use at an assay dependent concentration.
Format	Purified polyclonal antibody supplied in PBS with 0.09% (W/V) sodium azide. This antibody is purified through a protein A column, followed by peptide affinity purification.
Storage	Maintain refrigerated at 2-8°C for up to 2 weeks. For long term storage store at -20°C in small aliquots to prevent freeze-thaw cycles.
Precautions	SCRIB Antibody (N-term) is for research use only and not for use in diagnostic or therapeutic procedures.

Protein Information

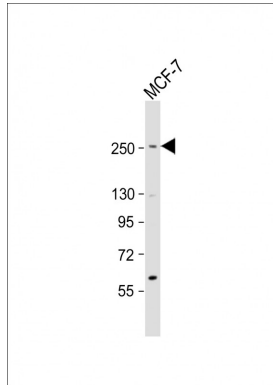
Background

SCRIB is a cytoplasmic multimodular scaffold protein targeted to epithelial adherens junctions and neuronal presynaptic compartments. SCRIB and its orthologs in vertebrates and invertebrates participate in cell polarization (summary by Nola et al., 2008 [PubMed 18716323]).

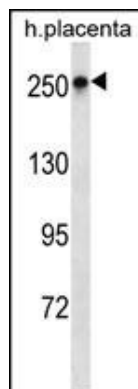
References

Liu, H., et al. J. Virol. 84(21):11164-11174(2010)
Nagasaka, K., et al. Oncogene 29(38):5311-5321(2010)
Ivanov, A.I., et al. Am. J. Pathol. 176(1):134-145(2010)
Ouyang, Z., et al. Oncol. Res. 18 (11-12), 593-599 (2010) :
Arnaud, C., et al. FEBS Lett. 583(14):2326-2332(2009)

Images



Anti-SCRIB Antibody (N-term) at 1:2000 dilution + MCF-7 whole cell lysates/proteins at 20 µg per lane. Secondary Goat Anti-Rabbit IgG, (H+L), Peroxidase conjugated at 1/10000 dilution. Predicted band size : 175 kDa Blocking/Dilution buffer: 5% NFDM/TBST.



SCRIB Antibody (N-term)(Cat. #AP18837a) western blot analysis in human placenta tissue lysates (35ug/lane).This demonstrates the SCRIB antibody detected the SCRIB protein (arrow).

Please note: All products are 'FOR RESEARCH USE ONLY. NOT FOR USE IN DIAGNOSTIC OR THERAPEUTIC PROCEDURES'.