

# PMS2L5 Antibody (C-term)

Affinity Purified Rabbit Polyclonal Antibody (Pab)

Catalog # AP18858b

## Product Information

---

<b>Application</b>	WB, E
<b>Primary Accession</b>	<a href="#">A8MQ11</a>
<b>Reactivity</b>	Human
<b>Host</b>	Rabbit
<b>Clonality</b>	Polyclonal
<b>Isotype</b>	Rabbit IgG
<b>Clone Names</b>	RB39625
<b>Calculated MW</b>	15170
<b>Antigen Region</b>	82-107

## Additional Information

---

<b>Other Names</b>	Postmeiotic segregation increased 2-like protein 5, Postmeiotic segregation increased protein 4, Postmeiotic segregation increased protein 7, Putative postmeiotic segregation increased 2 pseudogene 5, PMS2P5, PMS2L5, PMS4, PMS7
<b>Target/Specificity</b>	This PMS2L5 antibody is generated from rabbits immunized with a KLH conjugated synthetic peptide between 82-107 amino acids from the C-terminal region of human PMS2L5.
<b>Dilution</b>	WB~~1:1000 E~~Use at an assay dependent concentration.
<b>Format</b>	Purified polyclonal antibody supplied in PBS with 0.09% (W/V) sodium azide. This antibody is purified through a protein A column, followed by peptide affinity purification.
<b>Storage</b>	Maintain refrigerated at 2-8°C for up to 2 weeks. For long term storage store at -20°C in small aliquots to prevent freeze-thaw cycles.
<b>Precautions</b>	PMS2L5 Antibody (C-term) is for research use only and not for use in diagnostic or therapeutic procedures.

## Protein Information

---

<b>Name</b>	PMS2P5
<b>Synonyms</b>	PMS2L5, PMS4, PMS7

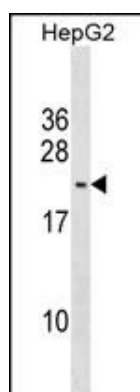
## Background

---

The function of this protein remains unknown.

## Images

---



PMS2L5 Antibody (C-term)(Cat. #AP18858b) western blot analysis in HepG2 cell line lysates (35ug/lane). This demonstrates the PMS2L5 antibody detected the PMS2L5 protein (arrow).

Please note: All products are 'FOR RESEARCH USE ONLY. NOT FOR USE IN DIAGNOSTIC OR THERAPEUTIC PROCEDURES'.