

# PPIAL4A Antibody (Center)

Affinity Purified Rabbit Polyclonal Antibody (Pab)

Catalog # AP18860c

## Product Information

---

Application	WB, E
Primary Accession	<a href="#">Q9Y536</a>
Other Accession	<a href="#">A2BFH1</a> , <a href="#">F5H284</a> , <a href="#">NP_001129261.1</a>
Reactivity	Human
Host	Rabbit
Clonality	Polyclonal
Isotype	Rabbit IgG
Clone Names	RB39629
Calculated MW	18182
Antigen Region	66-92

## Additional Information

---

Gene ID	653505
Other Names	Peptidyl-prolyl cis-trans isomerase A-like 4A/B/C, PPIase A-like 4A, Chromosome 1-amplified sequence 2, COAS-2, Cyclophilin homolog overexpressed in liver cancer, PPIAL4A, COAS2
Target/Specificity	This PPIAL4A antibody is generated from rabbits immunized with a KLH conjugated synthetic peptide between 66-92 amino acids from the Central region of human PPIAL4A.
Dilution	WB~~1:1000 E~~Use at an assay dependent concentration.
Format	Purified polyclonal antibody supplied in PBS with 0.09% (W/V) sodium azide. This antibody is purified through a protein A column, followed by peptide affinity purification.
Storage	Maintain refrigerated at 2-8°C for up to 2 weeks. For long term storage store at -20°C in small aliquots to prevent freeze-thaw cycles.
Precautions	PPIAL4A Antibody (Center) is for research use only and not for use in diagnostic or therapeutic procedures.

## Protein Information

---

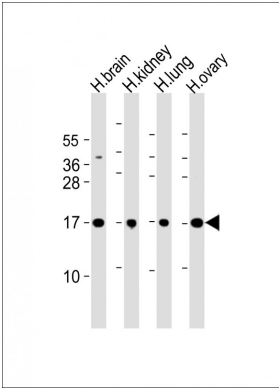
Name	PPIAL4A ( <a href="#">HGNC:24369</a> )
Function	PPIases accelerate the folding of proteins. It catalyzes the cis-trans isomerization of proline imidic peptide bonds in oligopeptides (By similarity).

Cellular Location	Cytoplasm {ECO:0000250 UniProtKB:P62937}.
Tissue Location	Highly expressed in brain, ovary and mammary gland. Moderately expressed in lung, salivary gland, kidney, skin, adipose tissue, intestine and spleen. Weakly expressed in skeletal muscle, liver and stomach. Expressed in pleiomorphic and undifferentiated liposarcomas, osteosarcomas and breast carcinomas

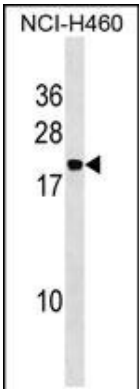
## Background

PPIases accelerate the folding of proteins. It catalyzes the cis-trans isomerization of proline imidic peptide bonds in oligopeptides (By similarity).

## Images



All lanes : Anti-PPIAL4A Antibody (Center) at 1:2000 dilution Lane 1: human brain lysate Lane 2: human kidney lysate Lane 3: human lung lysate Lane 4: human ovary lysate Lysates/proteins at 20 µg per lane. Secondary Goat Anti-Rabbit IgG, (H+L), Peroxidase conjugated at 1/10000 dilution. Predicted band size : 18 kDa Blocking/Dilution buffer: 5% NFDM/TBST.



PPIAL4A Antibody (Center)(Cat. #AP18860c) western blot analysis in NCI-H460 cell line lysates (35ug/lane).This demonstrates the PPIAL4A antibody detected the PPIAL4A protein (arrow).

Please note: All products are 'FOR RESEARCH USE ONLY. NOT FOR USE IN DIAGNOSTIC OR THERAPEUTIC PROCEDURES'.