

# PRAMEF11 Antibody (Center)

Affinity Purified Rabbit Polyclonal Antibody (Pab)

Catalog # AP18862c

## Product Information

---

Application	WB, E
Primary Accession	<a href="#">O60813</a>
Other Accession	<a href="#">Q5VWM5</a> , <a href="#">Q5VXH4</a> , <a href="#">Q5TYX0</a> , <a href="#">O60810</a> , <a href="#">A6NMV5</a> , <a href="#">NP_001139816.1</a>
Reactivity	Human
Host	Rabbit
Clonality	Polyclonal
Isotype	Rabbit IgG
Clone Names	RB39632
Calculated MW	55344
Antigen Region	188-214

## Additional Information

---

Gene ID	440560
Other Names	PRAME family member 11, PRAMEF11
Target/Specificity	This PRAMEF11 antibody is generated from rabbits immunized with a KLH conjugated synthetic peptide between 188-214 amino acids from the Central region of human PRAMEF11.
Dilution	WB~~1:1000 E~~Use at an assay dependent concentration.
Format	Purified polyclonal antibody supplied in PBS with 0.09% (W/V) sodium azide. This antibody is purified through a protein A column, followed by peptide affinity purification.
Storage	Maintain refrigerated at 2-8°C for up to 2 weeks. For long term storage store at -20°C in small aliquots to prevent freeze-thaw cycles.
Precautions	PRAMEF11 Antibody (Center) is for research use only and not for use in diagnostic or therapeutic procedures.

## Protein Information

---

Name	PRAMEF11 ( <a href="#">HGNC:14086</a> )
------	---

## Background

---

The function of this protein remains unknown.

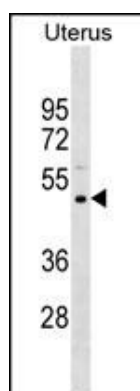
## References

---

Gregory, S.G., et al. Nature 441(7091):315-321(2006)

## Images

---



PRAMEF11 Antibody (Center)(Cat. #AP18862c) western blot analysis in Uterus tissue lysates (35ug/lane). This demonstrates the PRAMEF11 antibody detected the PRAMEF11 protein (arrow).

Please note: All products are 'FOR RESEARCH USE ONLY. NOT FOR USE IN DIAGNOSTIC OR THERAPEUTIC PROCEDURES'.