

RAB22A Antibody (C-term)

Affinity Purified Rabbit Polyclonal Antibody (Pab)

Catalog # AP18867b

Product Information

Application	WB, E
Primary Accession	Q9UL26
Other Accession	P35285 , NP_065724.1
Reactivity	Human
Predicted	Mouse
Host	Rabbit
Clonality	Polyclonal
Isotype	Rabbit IgG
Clone Names	RB39644
Calculated MW	21855
Antigen Region	166-192

Additional Information

Gene ID	57403
Other Names	Ras-related protein Rab-22A, Rab-22, RAB22A, RAB22
Target/Specificity	This RAB22A antibody is generated from rabbits immunized with a KLH conjugated synthetic peptide between 166-192 amino acids from the C-terminal region of human RAB22A.
Dilution	WB~~1:1000 E~~Use at an assay dependent concentration.
Format	Purified polyclonal antibody supplied in PBS with 0.09% (W/V) sodium azide. This antibody is purified through a protein A column, followed by peptide affinity purification.
Storage	Maintain refrigerated at 2-8°C for up to 2 weeks. For long term storage store at -20°C in small aliquots to prevent freeze-thaw cycles.
Precautions	RAB22A Antibody (C-term) is for research use only and not for use in diagnostic or therapeutic procedures.

Protein Information

Name	RAB22A
Synonyms	RAB22
Function	Plays a role in endocytosis and intracellular protein transport. Mediates

trafficking of TF from early endosomes to recycling endosomes (PubMed:[16537905](#)). Required for NGF-mediated endocytosis of NTRK1, and subsequent neurite outgrowth (PubMed:[21849477](#)). Binds GTP and GDP and has low GTPase activity. Alternates between a GTP-bound active form and a GDP-bound inactive form (PubMed:[16537905](#)).

Cellular Location

Endosome membrane {ECO:0000250|UniProtKB:P51154}; Lipid-anchor. Cell membrane {ECO:0000250|UniProtKB:P51154}; Lipid-anchor. Early endosome. Late endosome {ECO:0000250|UniProtKB:P51154}. Cell projection, ruffle. Cytoplasmic vesicle. Cytoplasmic vesicle, phagosome. Cytoplasmic vesicle, phagosome membrane; Lipid-anchor; Cytoplasmic side. Note=Recruited to phagosomes containing S.aureus or M.tuberculosis.

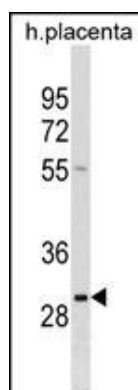
Background

The protein encoded by this gene is a member of the RAB family of small GTPases. The GTP-bound form of the encoded protein has been shown to interact with early-endosomal antigen 1, and may be involved in the trafficking of and interaction between endosomal compartments.

References

Zhu, H., et al. Mol. Biol. Cell 20(22):4720-4729(2009)
Magadan, J.G., et al. Mol. Cell. Biol. 26(7):2595-2614(2006)
Mesa, R., et al. Exp. Cell Res. 304(2):339-353(2005)
Barrios-Rodiles, M., et al. Science 307(5715):1621-1625(2005)
Weigert, R., et al. Mol. Biol. Cell 15(8):3758-3770(2004)

Images



RAB22A Antibody (C-term)(Cat. #AP18867b) western blot analysis in human placenta tissue lysates (35ug/lane). This demonstrates the RAB22A antibody detected the RAB22A protein (arrow).

Please note: All products are 'FOR RESEARCH USE ONLY. NOT FOR USE IN DIAGNOSTIC OR THERAPEUTIC PROCEDURES'.