

# TAS2R41 Antibody (N-term)

Affinity Purified Rabbit Polyclonal Antibody (Pab)

Catalog # AP18880a

## Product Information

---

<b>Application</b>	WB, E
<b>Primary Accession</b>	<a href="#">P59536</a>
<b>Other Accession</b>	<a href="#">NP_795364.2</a>
<b>Reactivity</b>	Human
<b>Host</b>	Rabbit
<b>Clonality</b>	Polyclonal
<b>Isotype</b>	Rabbit IgG
<b>Clone Names</b>	RB39847
<b>Calculated MW</b>	35896
<b>Antigen Region</b>	14-40

## Additional Information

---

<b>Gene ID</b>	259287
<b>Other Names</b>	Taste receptor type 2 member 41, T2R41, Taste receptor type 2 member 59, T2R59, TAS2R41
<b>Target/Specificity</b>	This TAS2R41 antibody is generated from rabbits immunized with a KLH conjugated synthetic peptide between 14-40 amino acids from the N-terminal region of human TAS2R41.
<b>Dilution</b>	WB~~1:1000 E~~Use at an assay dependent concentration.
<b>Format</b>	Purified polyclonal antibody supplied in PBS with 0.09% (W/V) sodium azide. This antibody is purified through a protein A column, followed by peptide affinity purification.
<b>Storage</b>	Maintain refrigerated at 2-8°C for up to 2 weeks. For long term storage store at -20°C in small aliquots to prevent freeze-thaw cycles.
<b>Precautions</b>	TAS2R41 Antibody (N-term) is for research use only and not for use in diagnostic or therapeutic procedures.

## Protein Information

---

<b>Name</b>	TAS2R41
<b>Function</b>	Receptor that may play a role in the perception of bitterness and is gustducin-linked. May play a role in sensing the chemical composition of the gastrointestinal content. The activity of this receptor may stimulate alpha

gustducin, mediate PLC-beta-2 activation and lead to the gating of TRPM5 (By similarity).

**Cellular Location** Membrane; Multi-pass membrane protein.

**Tissue Location** Expressed in subsets of taste receptor cells of the tongue and exclusively in gustducin-positive cells

## Background

---

Receptor that may play a role in the perception of bitterness and is gustducin-linked. May play a role in sensing the chemical composition of the gastrointestinal content. The activity of this receptor may stimulate alpha gustducin, mediate PLC-beta-2 activation and lead to the gating of TRPM5 (By similarity).

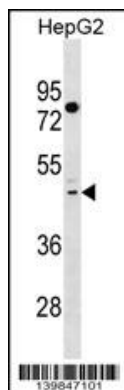
## References

---

Go, Y., et al. Genetics 170(1):313-326(2005)  
Fischer, A., et al. Mol. Biol. Evol. 22(3):432-436(2005)  
Zhang, Y., et al. Cell 112(3):293-301(2003)  
Bufe, B., et al. Nat. Genet. 32(3):397-401(2002)  
Montmayeur, J.P., et al. Curr. Opin. Neurobiol. 12(4):366-371(2002)

## Images

---



TAS2R41 Antibody (N-term)(Cat. #AP18880a) western blot analysis in HepG2 cell line lysates (35ug/lane). This demonstrates the TAS2R41 antibody detected the TAS2R41 protein (arrow).

Please note: All products are 'FOR RESEARCH USE ONLY. NOT FOR USE IN DIAGNOSTIC OR THERAPEUTIC PROCEDURES'.