

FLOT1 Antibody (N-term)

Affinity Purified Rabbit Polyclonal Antibody (Pab)
Catalog # AP18905a

Product Information

Application	WB, E
Primary Accession	Q75955
Other Accession	Q9Z1E1 , Q767L6 , O08917 , Q08DN8 , NP_005794.1
Reactivity	Human, Rat, Mouse
Predicted	Bovine, Mouse, Pig, Rat
Host	Rabbit
Clonality	Polyclonal
Isotype	Rabbit IgG
Clone Names	RB40153
Antigen Region	104-133

Additional Information

Other Names	Flotillin-1, FLOT1
Target/Specificity	This FLOT1 antibody is generated from rabbits immunized with a KLH conjugated synthetic peptide between 104-133 amino acids from the N-terminal region of human FLOT1.
Dilution	WB~~1:1000 E~~Use at an assay dependent concentration.
Format	Purified polyclonal antibody supplied in PBS with 0.05% (V/V) Proclin 300. This antibody is prepared by Saturated Ammonium Sulfate (SAS) precipitation followed by dialysis against PBS.
Storage	Maintain refrigerated at 2-8°C for up to 2 weeks. For long term storage store at -20°C in small aliquots to prevent freeze-thaw cycles.
Precautions	FLOT1 Antibody (N-term) is for research use only and not for use in diagnostic or therapeutic procedures.

Protein Information

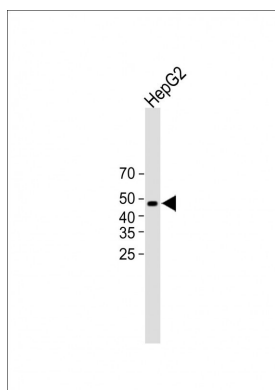
Background

Caveolae are small domains on the inner cell membrane involved in vesicular trafficking and signal transduction. FLOT1 encodes a caveolae-associated, integral membrane protein. The function of flotillin 1 has not been determined. [provided by RefSeq].

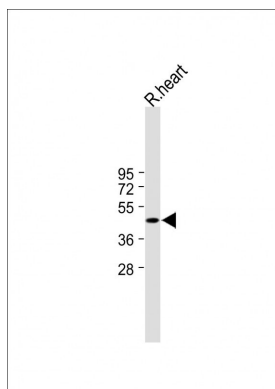
References

Lee, B.Y., et al. Mol. Cell Proteomics 9(1):32-53(2010)
Barcellos, L.F., et al. PLoS Genet. 5 (10), E1000696 (2009) :
Saalik, P., et al. Bioconjug. Chem. 20(5):877-887(2009)
Rajendran, L., et al. PLoS ONE 4 (12), E8290 (2009) :
Rossey, J., et al. PLoS ONE 4 (4), E5403 (2009) :

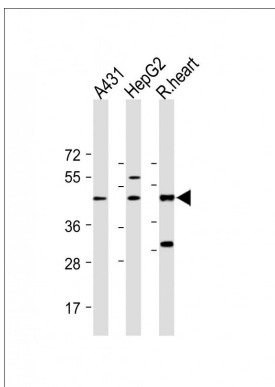
Images



All lanes : Anti-FLOT1 Antibody (N-term) at 1:2000 dilution
Lane 1: HepG2 whole cell lysate Lysates/proteins at 20 μ g per lane. Secondary Goat Anti-Rabbit IgG, (H+L), Peroxidase conjugated (ASP1615) at 1/15000 dilution. Observed band size : 47kDa Blocking/Dilution buffer: 5% NFDm/TBST.

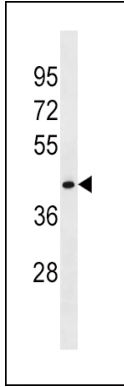
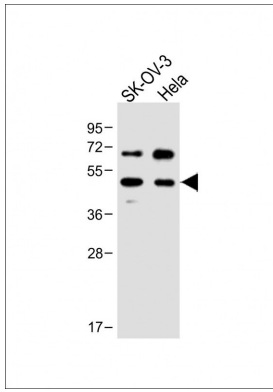


All lanes : Anti-FLOT1 Antibody (N-term) at 1:1000 dilution
Lane 1: Rat heart tissue lysate Lysates/proteins at 20 μ g per lane. Secondary Goat Anti-Rabbit IgG, (H+L), Peroxidase conjugated (ASP1615) at 1/15000 dilution. Observed band size : 47kDa Blocking/Dilution buffer: 5% NFDm/TBST.



All lanes : Anti-FLOT1 Antibody (N-term) at 1:1000 dilution
Lane 1: A431 whole cell lysate Lane 2: HepG2 whole cell lysate Lane 3: R. heart whole cell lysate Lysates/proteins at 20 μ g per lane. Secondary Goat Anti-Rabbit IgG, (H+L), Peroxidase conjugated (ASP1615) at 1/15000 dilution. Observed band size : 45kDa Blocking/Dilution buffer: 5% NFDm/TBST.

All lanes : Anti-FLOT1 Antibody (N-term) at 1:1000 dilution
Lane 1: SK-OV-3 whole cell lysate Lane 2: Hela whole cell lysate Lysates/proteins at 20 μ g per lane. Secondary Goat Anti-Rabbit IgG, (H+L), Peroxidase conjugated at 1/10000 dilution. Predicted band size : 47 kDa Blocking/Dilution buffer: 5% NFDm/TBST.



FLOT1 Antibody (N-term)(Cat. #AP18905a) western blot analysis in HepG2 cell line lysates (35ug/lane). This demonstrates the FLOT1 antibody detected the FLOT1 protein (arrow).

Please note: All products are 'FOR RESEARCH USE ONLY. NOT FOR USE IN DIAGNOSTIC OR THERAPEUTIC PROCEDURES'.